

Zoomerang Study Results

August 2003 - August 2011

**Prepared by: Dorothy Geraghty
Sammamish, WA**

October 2011

Table of Contents

	<u>Page</u>
Background/Research Design	3
Scope of Report	5
Summary of Findings	6
Detailed Findings	
Grade given to neighborhood school	8
Reasons for grades	10
Suggested changes for school	14
Grades given to Issaquah School District	17
Reasons for grades	19
Suggested changes for Issaquah School District	23
Best source of information about child's school	26
All sources of information about child's school	28
Best source of information about the Issaquah School District	30
All sources of information about the Issaquah School District	32

Background/Research Design

The Issaquah School District has conducted a “Zoomerang” web survey among parents of its Elementary, Middle School and High School students each Summer for nine years each—in August 2003 through August 2011. The primary purpose of these “Zoomerang” studies is to give all parents an opportunity to tell the District about:

- Their current satisfaction levels with the performance of the school that their oldest child attends and with the Issaquah District
- Reasons for current satisfaction levels
- Changes that parents desire at the school and district level

Additionally, learning is obtained regarding how parents are now receiving information about their child’s school and the District. When the District adds a new source, such as District E-News, its impact can be tracked.

The results of these studies are used as input for:

- assessing school and District performance
- planning improvements in Issaquah’s schools and the Issaquah District overall.

Please note that the sample is self selected and does not necessarily represent all parents in the District. All parents in the District are invited to participate in this study and the respondents are the ones who choose to participate. Importantly, all parents in the District are provided with the opportunity to give the District their input in this annual study.

The District also conducts a Community Polling study by telephone where respondents are selected randomly with age and sex quota groups so that the sample is representative of parents in the District. In this study the District obtains learning from residents of the community without children attending District schools as well as parents of students. The results of this study are covered in a separate report.

The number of parents participating in this study increased significantly during 2011. The breakdown of the sample by grade level of the oldest child attending school is:

Number of Parents Participating

	<u>2003</u>	<u>2004</u>	<u>2005</u>	<u>2006</u>	<u>2007</u>	<u>2008</u>	<u>2009</u>	<u>2010</u>	<u>2011</u>
Elementary School	234	175	217	230	435	352	320	466	1,134
Middle School	118	68	75	108	181	268	177	214	421
High School	127	76	84	148	117	240	139	189	332
Total	479	319	376	486	733	860	636	869	1,887

The subtotals do not always add up to the totals in the survey results because a few parents chose not to respond to all the questions. This is typical in surveys and happened infrequently in this study. Also responses do not always add up to 100% due to rounding. Instead at times they add up to 99% or 101%.

Statistically significant differences in responses at the 90% confidence level are noted.

Scope of Report

This study includes questions on:

- Grade oldest child attends
- Attendance area for oldest child
- Letter grade given to oldest child's school
- Why grade was given
- Changes suggested for school
- Letter grade given to Issaquah school district
- Why grade was given
- Changes suggested for district
- Best source of information about child's school
- All sources of information about child's school
- Best source of information about Issaquah School District
- All sources of information about Issaquah School District

Please note that with regard to the open-end responses (e. g., reasons for grades given) this report covers the responses given by 5% or more of the parents overall during the recent past.

Summary of Findings

- Issaquah District has achieved significantly higher grades in 2011 than in 2010 or 2003 (the baseline year).
 - Over eight out of ten parents (85%) now give their oldest child’s neighborhood school an A or B grade, which is significantly more than in 2003 (71%) and 2010 (79%).
 - The number of parents giving their child’s school an “A” has also increased significantly during the past year, from 32% in 2010 to 41% in 2011.
 - Almost nine in ten parents (86%) grade the Issaquah District’s performance an A or B, which is significantly more than in 2010 (78%) and 2003 (33%). The level of “A” grades given to the District has also increased significantly during the past year, from 24% of parents in 2010 to 38% in 2011.
- Most parents (82%) suggest at least one change or improvement at **their child’s school** but this is significantly fewer parents than in 2010 (90%). The lower levels of requests for changes/improvements may be a reflection of the higher levels of parents giving their child’s school an “A” grade.
- The requested improvements continue to be diverse. The most frequent requests are...
 - *Better teachers needed/better teacher-student relations*, with 21% of parents overall requesting this and 31% of parents of High School students. A significant minority of parents also requested this in 2010 (19%) and 2009 (15%).
 - *Improve communication to parents from teacher/school administration/provide more timely information* (14%)
 - *Change curriculum/go back to basics* (8%)
 - *Improvement needed in math curriculum* (8%)
 - *Need more AP classes/more challenging classwork/more access to Merlin* (7%)

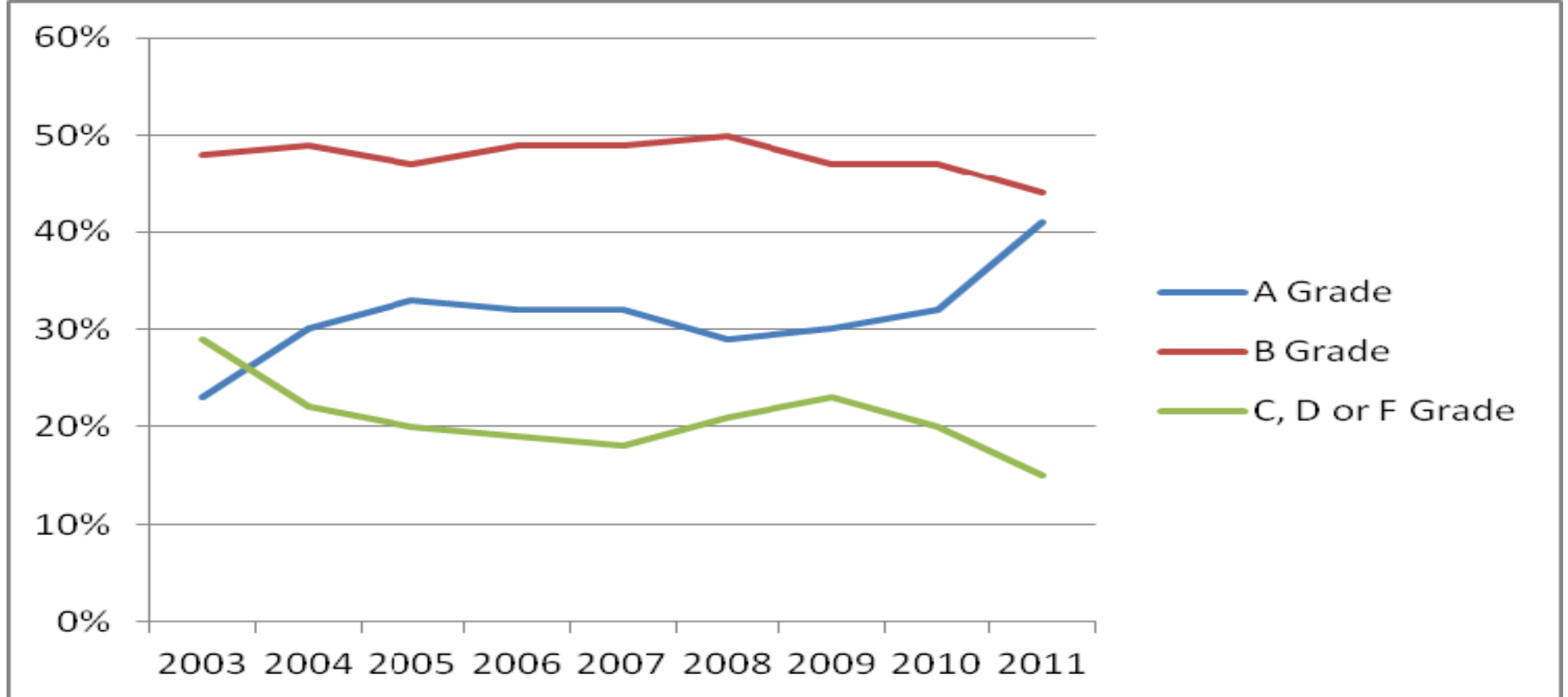
- Three out of four parents (75%) suggest some change or improvement **in the District**. This is significantly less than in 2010 (86%) or 2003 (92%).
- The requests for change or improvements at the District level continue to be diverse with none suggested by more than a small minority of parents. The most frequently made requests are...
 - *Better teachers needed/better student-teacher relations* (12%), which has been one of the most frequent requests in recent years (15% of parents in 2010 and 9% in 2009).
 - *Increase funding/school support/work with State for funding/better use of funds* (10%),
 - *Improve communications to parents from teachers/administrators/provide more timely information* (10%), which historically has been one of the most frequent requests.
 - *Change curriculum/go back to basics* (8%)
 - *Need more AP classes/more challenging coursework/more access to Merlin* (7%)
 - *Improvement needed in Math curriculum* (6%)
- Usage of School E-News has continued to grow. It is now considered the *best* source of information about their child's school by 47% of parents overall, followed in the distance by their child (16%) and their child's teacher (16%). Furthermore, eight in ten parents (81%) now consider the School E-News to be one of their sources of information about their child's school.
- During the past year, the District E-News has also continued to grow. It is now considered the *best* source of information about the District by approximately six in ten parents (61%). In the distance, the next most frequently considered best sources of information about the District are the Internet (10%) and School E-News (10%). The District E-News is now used by approximately four out of five (78%) parents as one of their sources of information about the District.

Detailed Findings

Grade Given to Neighborhood School

As the table chart below illustrates, most parents overall give their child's school an A or B grade. In 2011 41% give their child's school an A grade, 44% give a B grade and only 15% give a C or lower grade. Significantly more parents gave an "A" grade in 2011 than in 2010.

GRADE GIVEN TO NEIGHBORHOOD SCHOOL OF OLDEST CHILD



Parents of Elementary school students are especially likely to give their child’s school an “A” grade and parents of High school students are the least likely.

Grade Given to School by Year

	Wave I (August 2003)				Wave VI (August 2008)				Wave VII (August 2009)				Wave VIII (August 2010)				Wave IX (August 2011)			
	<i>Parents of Children in:</i>				<i>Parents of Children in:</i>				<i>Parents of Children in:</i>				<i>Parents of Children in:</i>				<i>Parents of Children in:</i>			
	Elementary	Middle	High		Elementary	Middle	High		Elementary	Middle	High		Elementary	Middle	High		Elementary	Middle	High	
	<u>All Parents</u>	<u>School</u>	<u>School</u>	<u>School</u>	<u>All Parents</u>	<u>School</u>	<u>School</u>	<u>School</u>	<u>All Parents</u>	<u>School</u>	<u>School</u>	<u>School</u>	<u>All Parents</u>	<u>School</u>	<u>School</u>	<u>School</u>	<u>All Parents</u>	<u>School</u>	<u>School</u>	<u>School</u>
Total Respondents:	479	234	118	127	860	352	268	240	636	320	177	139	869	466	214	189	1,887	1,134	421	332
Grade given:																				
A	23%	31%	22%	10	29%*	39%*	27%*	16%*	30%*	39%*	27%	14%	32%*	36%	32%*	23%**,**	41%**,**	45%**,**	39%**,**	30%**,**
B	48	47	57	43	50	47	49	55*	47	47	46	47	47	48	42*	51	44	43**	45*	47
C	21	19	14	31	16*	12*	18	20*	17	11*	19	30	14*	12*	17	17%**,**	11%**,**	9*	12%**,**	18*
D	6	3	6	13	4	1	6	8*	4	3	6	5*	4	2	8	6*	3%**,**	2	3%**,**	5*
F	2	0	2	4	1	1	0	2	2	1	3	3	2	2	1	3	1**	1**	1	1

* = Significant difference from Wave I at the 90% confidence level.

** = Significant difference from Wave VIII at the 90% confidence level.

Q. What grade would you give the school your oldest child attended in 2010-2011?

Positive Reason Given for Grade

As the following tables detail, when parents provide their reasons for the grade they gave their child's school, almost six in ten (58%) mention something positive. Parents of Elementary school students are especially likely to mention something positive.

Across school levels, the most frequently given positive reasons continue to be about...

- the teacher
- the school experience
- the quality of the programs/curriculum
- the Administration/staff

Positive Reasons for Grade Given School

	Wave I (August 2003)				Wave VI (August 2008)				Wave VII (August 2009)				Wave VIII (August 2010)				Wave IX (August 2011)							
	<i>Parents of Children in:</i>				<i>Parents of Children in:</i>				<i>Parents of Children in:</i>				<i>Parents of Children in:</i>				<i>Parents of Children in:</i>							
	Elementary		Middle		Elementary		Middle		Elementary		Middle		Elementary		Middle		Elementary		Middle		High			
	<u>All Parents</u>	<u>School</u>	<u>School</u>	<u>School</u>	<u>All Parents</u>	<u>School</u>	<u>School</u>	<u>School</u>	<u>All Parents</u>	<u>School</u>	<u>School</u>	<u>School</u>	<u>All Parents</u>	<u>School</u>	<u>School</u>	<u>School</u>	<u>All Parents</u>	<u>School</u>	<u>School</u>	<u>School</u>	<u>All Parents</u>	<u>School</u>	<u>School</u>	<u>School</u>
Total Respondents:	479	234	118	127	860	352	268	240	636	320	177	139	869	189	214	466	1,887	1,134	421	332				
<u>Mentioned something positive</u>	<u>51%</u>	<u>63%</u>	<u>53%</u>	<u>27%</u>	<u>57%*</u>	<u>68%</u>	<u>53%</u>	<u>45%*</u>	<u>47%</u>	<u>62%</u>	<u>37%</u>	<u>25%</u>	<u>55%**</u>	<u>60%</u>	<u>54%**</u>	<u>44%*,**</u>	<u>58%*</u>	<u>63%</u>	<u>53%</u>	<u>45%*</u>				
Satisfied with the school/experience	18	22	17	10	13*	16*	13	9	24*	28*	22	17	27*	27	35*,**	19*	30*	33*,**	28*,**	20*				
Like teacher/quality of teacher	25	36	19	9	24	35	18	13	24	38	11	9	26	32**	20**	20*,**	28	32	24*	20*				
Quality of programs/curriculum	15	21	13	8	12	15*	9	12	7*	12*	2*	0*	13**	12*	14**	14*,**	14	14*	12	13*				
Positive about administration/good staff	10	13	8	5	7	11	6	4	9	13	5	3	11**	13	10**	8**	12	13	12	7				
Good parental involvement/support/communication	7	12	5	2	5*	5*	4	3	6	9	2	2	6	9	3	4	6	6*,**	7**	5				
Good/like principal/good leadership	5	9	3	1	4**	6	2	3	0*	0*	0*	0*	6**	9**	1	2	6	8	3**	2				

* = Significant difference vs. Wave I at the 90% confidence level.

** = Significant difference vs. Wave VIII at the 90% confidence level.

Note: All other positive reasons mentioned by less than 5% of parents.

Q. Why did you give this grade?

Negative Reasons for Grade Given to School

Possibly reflecting the higher number of A grades being given to schools this year, significantly fewer parents (51%) give a negative reason for the grade they give their child's school than in 2010 (61%) or in 2003 (65%).

Parents of Elementary school students continue to be less likely to mention something negative than parents of older students.

As the following table details, the negative comments continue to be diverse with no single dissatisfaction mentioned by more than a small minority of parents.

The most frequently given negative reason for the grade given continues to be *better teachers needed/better teacher-student relations*. Overall, 16% of parents mention this, with parents of High School students (26%) especially likely to say this.

The next most frequent reason concerns *communications*; i.e., 7% say that they want *communication from teachers/Administration improved/more timely information provided*.

Negatives Reasons Given for Grade Given to School

	Wave I (August 2003)				Wave VI (August 2008)				Wave VII (August 2009)				Wave VIII (August 2010)				Wave IX (August 2011)									
	<i>Parents of Children in:</i>				<i>Parents of Children in:</i>				<i>Parents of Children in:</i>				<i>Parents of Children in:</i>				<i>Parents of Children in:</i>									
	Elementary		Middle		Elementary		Middle		Elementary		Middle		Elementary		Middle		Elementary		Middle		Elementary		Middle		High	
	<u>All Parents</u>	<u>School</u>	<u>School</u>	<u>School</u>	<u>All Parents</u>	<u>School</u>	<u>School</u>	<u>School</u>	<u>All Parents</u>	<u>School</u>	<u>School</u>	<u>School</u>	<u>All Parents</u>	<u>School</u>	<u>School</u>	<u>School</u>	<u>All Parents</u>	<u>School</u>	<u>School</u>	<u>School</u>	<u>All Parents</u>	<u>School</u>	<u>School</u>	<u>School</u>		
Total Respondents:	479	234	118	127	860	352	268	240	636	320	177	139	869	466	214	189	1,187	1,134	421	332						
<u>MENTIONED SOMETHING NEG- ATIVE/IMPROVEMENT NEEDED</u>	<u>65%</u>	<u>56%</u>	<u>64%</u>	<u>84%</u>	<u>65%</u>	<u>53%</u>	<u>67%</u>	<u>78%</u>	<u>62%</u>	<u>51%</u>	<u>67%</u>	<u>82%</u>	<u>61%</u>	<u>56%</u>	<u>61%</u>	<u>72%*, **</u>	<u>51%*, **</u>	<u>45%*, **</u>	<u>56%*</u>	<u>63%*, **</u>						
<u>Mentioned communications:</u>	<u>10%</u>	<u>5%</u>	<u>14%</u>	<u>13%</u>	9	6	10	11	8	5	12	7	10	8**	14	8	8**	6	10	9						
Improve communication to parents from teachers/ administration/provide more timely information	7	4	9	9	8	5	10	9	7	4	12	6	10*, **	8*, **	14	8	7**	6	10	9						
Need to listen to parents/community/solicit input	3	1	5	6	2	1	1*	4	1*	1	1*	2	0*, **	0	0*	0*, **	1*, **	1	2*	0*						
<u>Mentioned other reasons:</u>																										
Better teachers needed/better teacher-student relations	8	4	8	15	15*	9*	16*	20	18*	12*	20*	31*	18*	12*	19*	30*	16*	12*	17*	26*						
Need more AP classes/more challenging coursework	3	3	5	2	4	4	6	0	4	4	6	4	7*, **	7*, **	8	5	5	6*	4**	2						
Improvement needed in math curriculum	4	3	6	1	6*	7*	3	7*	6*	6	6	9*	6*	5	7	5	5	4	5	8*						

* = Significant difference vs. Wave I at 90% confidence level.

** = Significant difference vs. Wave VIII at the 90% confidence level.

Note: All other negative reasons were mentioned by less than 5% of parents.

Q. Why did you give this grade?

Suggested Changes for Child's School

Possibly reflecting the higher level of "A" grades being given to schools, significantly fewer parents suggest a change this year than last year (82% in 2011 vs. 90% in 2010)

As the following tables detail, the changes suggested continue to be diverse with only a minority suggesting any one improvement.

The most frequently suggested changes are:

- *Better teachers needed/better teacher-student relations* (21%). A significant minority of parents (19%) also requested this in 2010 and in 2009 (15%).
 - Parents of High School students (31%) are especially likely to suggest this.
- *Improve communications to parents from teachers/administration/provide more timely information* (14%).
- *Improvement needed in math curriculum* (8%)
- *Change curriculum/go back to basics* (8%)
- *Need more AP classes/more challenging coursework* (7%)

Suggested Changes for School

	Wave I (August 2003)				Wave VI (August 2008)				Wave VII (August 2009)				Wave VIII (August 2010)				Wave IX (August 2011)			
	<i>Parents of Children in:</i>				<i>Parents of Children in:</i>				<i>Parents of Children in:</i>				<i>Parents of Children in:</i>				<i>Parents of Children in:</i>			
	Elementary		Middle	High	Elementary		Middle	High	Elementary		Middle	High	Elementary		Middle	High	Elementary		Middle	High
	All Parents	School	School	School	All Parents	School	School	School	All Parents	School	School	School	All Parents	School	School	School	All Parents	School	School	School
Total Respondents:	479	234	118	127	860	352	268	240	636	320	177	139	869	466	214	189	1,887	1,134	421	332
<u>SUGGESTED A CHANGE</u>	<u>85%</u>	<u>84%</u>	<u>86%</u>	<u>87%</u>	<u>90%*</u>	<u>85%</u>	<u>92%</u>	<u>95%*</u>	<u>84%</u>	<u>79%</u>	<u>89%</u>	<u>89%</u>	<u>90%*,**</u>	<u>89%**</u>	<u>88%</u>	<u>93%*</u>	<u>82%**</u>	<u>80%**</u>	<u>82%**</u>	<u>86%**</u>
<u>Suggested an improvement in communications:</u>	<u>16%</u>	<u>11%</u>	<u>20%</u>	<u>20%</u>	<u>15%</u>	<u>10%</u>	<u>10%</u>	<u>19%</u>	<u>14%</u>	<u>13%</u>	<u>16%</u>	<u>15%</u>	<u>18%**</u>	<u>19%*,**</u>	<u>19%</u>	<u>17%</u>	<u>17%</u>	<u>17%*</u>	<u>17%</u>	<u>16%</u>
Improve communication to parents from teachers/administration/provide more timely information	9	7	12	10	14*	10*	15*	19*	12	10	14	14	17*,**	18*	17	14	14*	13*	15	15
Need to listen to parents/community/solicit input	8	4	10	12	3*	1*	3*	5*	3*	3	3*	3*	2*	1*	3*	4*	4*,**	6**	2*	1*,**
<u>Other suggested improvements:</u>																				
Better teachers needed/better teacher-student relations	10	7	11	15	8	9	8	9	15*	8	21*	22	19*	16*	19	29*	21*	18*	22*	31*
Improvement needed in math curriculum	4	2	3	7	6*	7*	5	7	8*	9*	6	9	9*	10*	9	6	8*	8*	6	8
Change curriculum/go back to basics	2	5	6	4	2	2	2	1	5	4	6	4	6	8	3	7	8*	9*	4	6
Need more AP classes/more challenging coursework	6	7	8	3	7	8	9	4	5	6	4	3	9*	10	7	7*	7	9	4	3

* = Significant difference vs. Wave I at 90% confidence level.

** = Significant difference vs. Wave VIII at 90% confidence level.

Note: All other changes were mentioned by less than 5% of parents.

Q. What would you suggest as changes that might cause you to give that school a higher grade for next year?

Suggested Changes for School Cont'd.

	Wave I (August 2003)				Wave VI (August 2008)				Wave VII (August 2009)				Wave VIII (August 2010)				Wave IX (August 2011)					
	Parents of Children in:				Parents of Children in:				Parents of Children in:				Parents of Children in:				Parents of Children in:					
	Elementary		Middle		Elementary		Middle		Elementary		Middle		Elementary		Middle		Elementary		Middle		High	
	All Parents	School	School	School	All Parents	School	School	School	All Parents	School	School	School	All Parents	School	School	School	All Parents	School	School	School		
Total Respondents:	479	234	118	127	860	352	268	240	636	320	177	139	869	466	214	189	1,887	1,134	421	332		
More focus on student's individual needs/ improve school learning experience	8	7	4	12	8	9	7	8	6	4	6	9	5	6	4	4*	6	7	6	5		
Better training/monitoring of new teachers	3	3	2	4	12*	8*	9*	21*	5	4	4	7	6*	6	5	6	5*	4	6*	5		
Facilities need improvement/upgrade lockers	3	3	1	6	4	2	3	8	6*	6*	2	8	5*	4*	2	8	4*	5*	4*	2**		
Need to reduce class size/lower student-teacher ratio	3	3	2	4	4	7	4	1*	6*	7*	7*	2	8*	10*	6*	4	4**	6**	2**	2		

* = Significant difference vs. Wave I at 90% confidence level.

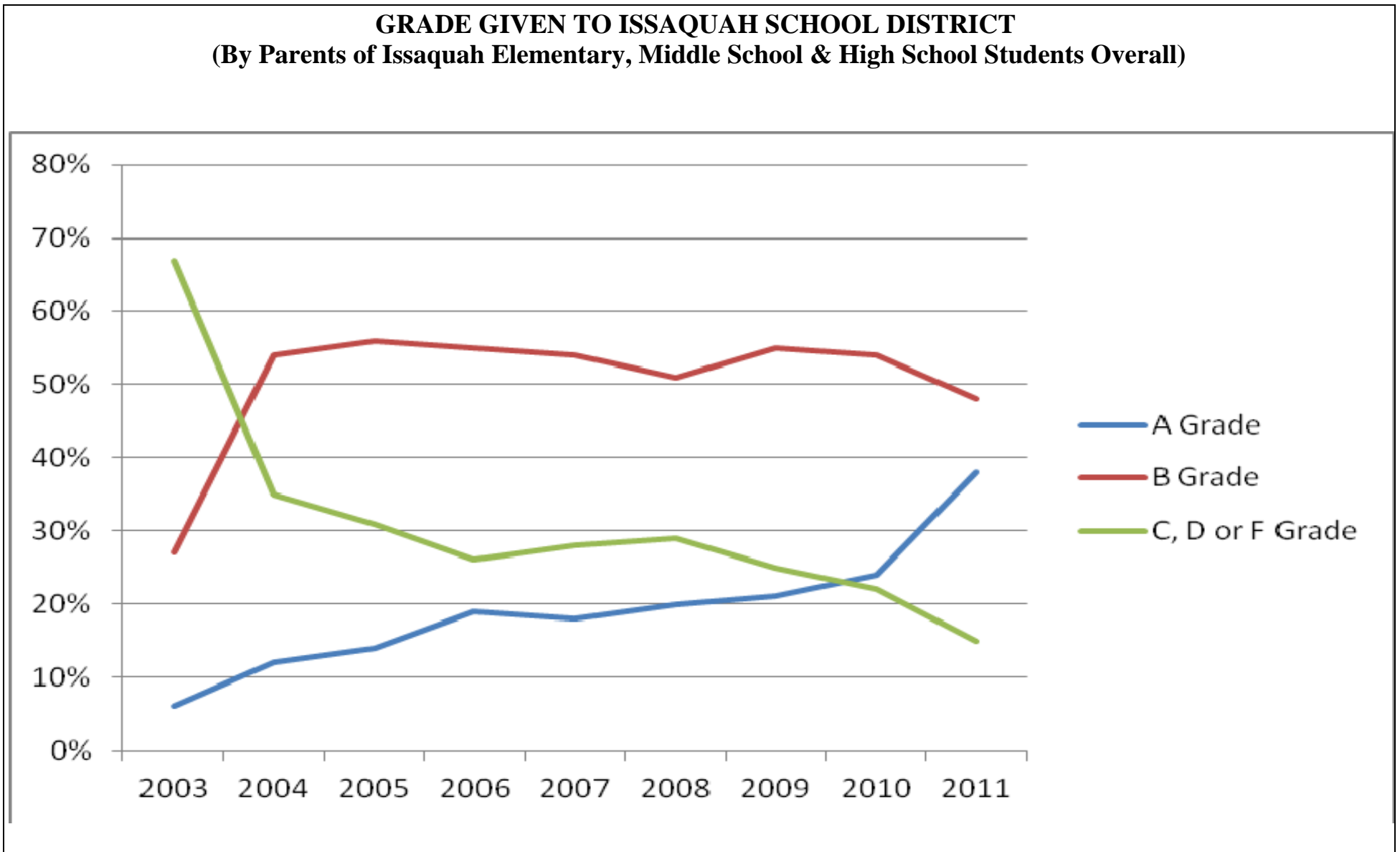
** = Significant difference vs. Wave VIII at 90% confidence level.

Note: All other changes were mentioned by less than 5% of parents.

Q. What would you suggest as changes that might cause you to give that school a higher grade for next year?

Grade Given to Issaquah School District

Almost 9 in 10 parents (86%) give the District an A or B grade for its performance. The number of parents giving an A grade increased significantly since 2010, from 24% to 38%.



Across school levels, the level of A grades being given to Issaquah school district increased significantly since 2010.

Grade Given to Issaquah School District by Year

	Wave I (August 2003)				Wave VI (August 2008)				Wave VII (August 2009)				Wave VIII (August 2010)				Wave IX (August 2011)				
	<i>Parents of Children in:</i>				<i>Parents of Children in:</i>				<i>Parents of Children in:</i>				<i>Parents of Children in:</i>				<i>Parents of Children in:</i>				
	Elementary		Middle		Elementary		Middle		Elementary		Middle		Elementary		Middle		Elementary		Middle		High
	All Parents	School	School	School	All Parents	School	School	School	All Parents	School	School	School	All Parents	School	School	School	All Parents	School	School	School	
Total Respondents:	479	234	118	127	860	352	268	240	636	320	177	130	869	466	214	189	1,187	1,134	421	332	
Grade given:																					
A	6%	7%	4%	4%	20%*	22%*	19%*	17%*	21%*	24%*	23%*	12%*	24%*	26%*	20%*	22%*,**	38%*,**	39%*,**	37%*,**	33%*,**	
B	27	26	34	23%	51*	55*	55*	41*	55*	57*	50*	55*	54*	56*	52*	51*	48*,**	48*,**	47*	47*	
C	37	40	33	35%	22*	18*	21*	31	19*	16*	18*	27	16*	14*	19*	18*	12*,**	11*,**	12*,**	16*	
D	20	19	18	24%	5*	4*	5*	5*	4*	3*	6*	3*	4*	3*	6*	7*	2*,**	2*	3*,**	3*,**	
F	10	8	11	14%	2*	1*	0*	5*	2*	0*	3*	3*	2*	1*	3*	2*	1*,**	1*	1*,**	1*	

* = Significant difference from Wave I at the 90% confidence level.

** = Significant difference from Wave VIII at the 90% confidence level.

Q. What grade would you give the Issaquah School District for 2010 - 2011?

Reasons for Grades

The number of parents giving a positive reason for the grade they give to the District has increased significantly during the past year and vs. 2003, (from 16% of parents in 2003 to 45% in 2010 to 51% in 2011).

As the table below details, the most frequently given positive reasons are that they are *satisfied with the school experience* and that *there is good parental involvement/support/communication*.

Positive Reasons for Grade Given to District

	Wave I (August 2003)				Wave VI (August 2008)				Wave VII (August 2009)				Wave VIII (August 2010)				Wave IX (August 2011)			
	Parents of Children in:				Parents of Children in:				Parents of Children in:				Parents of Children in:				Parents of Children in:			
	All Parents	Elementary School	Middle School	High School	All Parents	Elementary School	Middle School	High School	All Parents	Elementary School	Middle School	High School	All Parents	Elementary School	Middle School	High School	All Parents	Elementary School	Middle School	High School
Total Respondents:	479	234	118	127	860	352	268	240	636	320	177	130	869	466	214	189	1,187	1,134	421	332
Gave a positive reason	16%	18%	14%	15%	39%*	42%*	39%*	36%*	38%*	40%*	38%*	33%*	45%*,**	47%*,**	42%*	42%*	51%*,**	52%*,**	51%*,**	48%*
Satisfied/happy with school/experience	2	3	1	0	7*	9*	6*	6*	21*	20*	23*	22*	25*,**	28*,**	21*	23*	31*,**	30*	32*,**	32*,**
Good parental involvement/support/communication	0	0	0	0	7*	10*	5*	6*	12*	13*	11*	9*	11*	10*	10*	13*	12*	12*	13*	12*
Quality of programs/curriculum	5	6	4	2	4	6	4	2	3	4	2	2	5**	5	7**	3	8*,**	8**	8	6
Doing a good job	6	7	6	9	21*	19*	23*	22*	1	1	1	1	7**	7**	7**	5**	6	7	3**	4

* = Significant difference vs. Wave I at 90% confidence level.

** = Significant difference vs. Wave VIII at 90% confidence level.

Q. Why did you give this grade?

Negative Reasons for Grades

In 2011, significantly fewer parents (46%) gave a negative reason for the grade they give to the District than in 2003 (85%) or 2010 (58%).

This may reflect the higher satisfaction levels that caused significantly more parents to give the District an “A” grade in 2011 than in previous years.

- The number of parents mentioning dissatisfaction with communications from the District has also significantly declined-- from 16% of parents overall in 2003 to 9% in 2010 and to 5% in 2011.
- There has also been a decline in the number of parents mentioning that they want *better Administration/leadership/community relations/decision making* (from 10% in 2003 to 2% in 2011).

Negative Reasons for Grade Given District

	Wave I (August 2003)				Wave VI (August 2008)				Wave VII (August 2009)				Wave VIII (August 2010)				Wave IX (August 2011)									
	<i>Parents of Children in:</i>				<i>Parents of Children in:</i>				<i>Parents of Children in:</i>				<i>Parents of Children in:</i>				<i>Parents of Children in:</i>									
	Elementary		Middle		Elementary		Middle		Elementary		Middle		Elementary		Middle		Elementary		Middle		Elementary		Middle		High	
	All Parents	School	School	School	All Parents	School	School	School	All Parents	School	School	School	All Parents	School	School	School	All Parents	School	School	School	All Parents	School	School	School		
Total Respondents:	479	234	118	127	860	352	268	240	636	320	177	130	869	189	214	466	1,187	1,134	421	332						
<u>Mentioned something negative/ improvement needed</u>	85%	85%	85%	87%	69%*	65%*	72%*	73%*	54%*	50%*	59%*	58%*	58%*	56%*,**	63%*	58%*	46%*,**	44%*,**	50%*,**	48%*,**						
<u>Mentioned Communication</u>	16	12	19	21	9*	6*	8*	16	6*	3*	8*	8*	9**,**	8**,**	14**,**	6*	5**,**	5*	5**,**	4*						
<u>Need to listen to parents/ community/solicit input</u>	11	6	15	16	4*	1*	3*	8	2*	1*	2*	3*	2*	2*	4*	2*	1**,**	1**,**	1**,**	1*						
<u>Improve communication to parents from teacher/administration/provide more timely information</u>	6	6	5	6	9*	6	8	15*	4	3	7	5	7**	6**	9	5	5**	5	5**	4						
<u>Other Reasons Mentioned</u>																										
<u>Increase funding/school support/work with State for funding</u>	5%	6%	4%	5%	6%	7%	7%	4%	6%	7%	2%	7%	8%*	6%	8%**	12%*	6**	5%	7	6**						
<u>Improvement needed in Math curriculum</u>	1	0	2	0	4*	6*	3	2	7*	6*	7*	7*	7*	6*	11*	4*	4**,**	4**,**	3**	5*						

* = Significant difference vs. Wave I at 90% confidence level.

** = Significant difference vs. Wave VIII at 90% confidence level.

Q. Why did you give this grade?

Negative Reasons for Grade Given District Cont'd.

	Wave I (August 2003)				Wave VI (August 2008)				Wave VII (August 2009)				Wave VIII (August 2010)				Wave IX (August 2011)			
	<i>Parents of Children in:</i>				<i>Parents of Children in:</i>				<i>Parents of Children in:</i>				<i>Parents of Children in:</i>				<i>Parents of Children in:</i>			
	Elementary		Middle	High	Elementary		Middle	High	Elementary		Middle	High	Elementary		Middle	High	Elementary		Middle	High
	All Parents	School	School	School	All Parents	School	School	School	All Parents	School	School	School	All Parents	School	School	School	All Parents	School	School	School
Total Respondents:	479	234	118	127	860	352	268	240	636	320	177	130	869	189	214	466	1,187	1,134	421	332
Better teachers needed/better student-teacher relations	2%	2%	4%	0%	2%	4%	2%	0%	5%*	3%	7%	6%*	7%*	6%*, **	7%	7%*	5%*, **	4%*, **	6%	6%*
School schedules	9	7	13	11	8	6	8	11	4*	4	5*	5	4*	4*	4*	5*	4*	3*	5*	3*
Better administration/leadership/ community relations/decision making	10	11	4	13	4*	2*	2*	8	2*	2*	2*	2*	3*	2*	2*	4*	2*	1*, **	1*	4*

* = Significant difference vs. Wave I at 90% confidence level.

** = Significant difference vs. Wave VIII at 90% confidence level.

Q. Why did you give this grade?

Suggested Changes for District

The majority of parents (75%) suggest at least one way that the District can change or improve--which is significantly fewer parents than in 2010 (86%) or 2003 (92%). As the tables that follow detail, the requests for changes continue to be diverse.

One of the most frequently requested change historically has been to improve communication. However, the number of parents requesting improved communication overall from the District has declined significantly (from 24% in 2003 to 12% in 2011).

While only mentioned by small minorities, the most frequently requested changes include...

- *Better teachers needed/better student-teacher relations*, which was suggested significantly more frequently in recent years than earlier (12% of parents in 2011, 15% in 2010 and 9% in 2009 vs. 3% in 2003).
- *Improve communications to parents from teachers/administration/provide more timely information* (10%)
- *Increase funding/school support/work with State for funding/better use of funds* (10%)
- *Change curriculum/go back to basics* (8% in 2011 vs. 3% in 2003).
- *Need more AP classes/more challenging coursework/more access to Merlin* (7% in 2011 vs, 4% in 2003).
- *Improvement needed in Math curriculum* (6% vs. 1% in 2003).

Suggested Changes for District

	Wave I (August 2003)				Wave VI (August 2008)				Wave VII (August 2009)				Wave VIII (August 2010)				Wave IX (August 2011)			
	<i>Parents of Children in:</i>				<i>Parents of Children in:</i>				<i>Parents of Children in:</i>				<i>Parents of Children in:</i>				<i>Parents of Children in:</i>			
	Elementary	Middle	High		Elementary	Middle	High		Elementary	Middle	High		Elementary	Middle	High		Elementary	Middle	High	
	<u>All Parents</u>	<u>School</u>	<u>School</u>	<u>School</u>	<u>All Parents</u>	<u>School</u>	<u>School</u>	<u>School</u>	<u>All Parents</u>	<u>School</u>	<u>School</u>	<u>School</u>	<u>All Parents</u>	<u>School</u>	<u>School</u>	<u>School</u>	<u>All Parents</u>	<u>School</u>	<u>School</u>	<u>School</u>
Total Respondents:	479	234	118	127	860	352	268	240	636	320	177	130	869	466	214	189	1,187	1,134	421	332
<u>SUGGESTED A CHANGE</u>	<u>92%</u>	<u>93%</u>	<u>94%</u>	<u>91%</u>	<u>89%*</u>	<u>89%</u>	<u>87%</u>	<u>90%</u>	<u>75%*</u>	<u>73%*</u>	<u>81%*</u>	<u>72%*</u>	<u>86%*,**</u>	<u>85%*,**</u>	<u>88%*</u>	<u>87%**</u>	<u>75%*,**</u>	<u>75%*,**</u>	<u>74%*,**</u>	<u>75%*,**</u>
<u>Suggested an improvement in communications</u>	<u>24%</u>	<u>23%</u>	<u>23%</u>	<u>25%</u>	<u>19%*</u>	<u>14%*</u>	<u>16%*</u>	<u>28%</u>	<u>13%*</u>	<u>12%*</u>	<u>13%*</u>	<u>15%</u>	<u>14%*</u>	<u>14%*</u>	<u>16%*</u>	<u>13%*</u>	<u>12%*</u>	<u>13%*</u>	<u>10%*</u>	<u>12%*</u>
Improve communication to parents from teachers/administration/provide more timely information	12	13	12	9	17*	12	16	25*	10	8	11	13	12	12	14	11	10	11	9	11
Need to listen to parents/community/solicit input	15	12	16	18	9*	6*	6*	16	4*	5*	2*	5*	3*	4*	3*	2*	2*	3*	2*	2*
<u>Suggested other improvements</u>																				
Better teachers needed/better student-teacher relations	3	2	3	6	2	4	1*	1*	9*	9*	10*	10	15*,**	12*	19*,**	17*	12*,**	11*	13*,**	15*
Increase funding/school support/work with State for funding/better use of funds	8	10	7	6	9	10	9	8	6	7	4	6	12*,**	13**	8	12*	10	9	11	9
Change curriculum/go back to basics	3	5	1	0	2	1	3	1	4	4	4	3	7*,**	7	6*	7*	8*	9*	4	7*

* = Significant difference vs. Wave I at 90% confidence level.

** = Significant difference vs. Wave VIII at 90% confidence level.

Q. What would you suggest as changes that might cause you to give the Issaquah School District a higher grade for next year?

Suggested Changes for District Cont'd.

	Wave I (August 2003)				Wave VI (August 2008)				Wave VII (August 2009)				Wave VIII (August 2010)				Wave IX (August 2011)			
	<i>Parents of Children in:</i>				<i>Parents of Children in:</i>				<i>Parents of Children in:</i>				<i>Parents of Children in:</i>				<i>Parents of Children in:</i>			
	Elementary		Middle	High	Elementary		Middle	High	Elementary		Middle	High	Elementary		Middle	High	Elementary		Middle	High
	<u>All Parents</u>	<u>School</u>	<u>School</u>	<u>School</u>	<u>All Parents</u>	<u>School</u>	<u>School</u>	<u>School</u>	<u>All Parents</u>	<u>School</u>	<u>School</u>	<u>School</u>	<u>All Parents</u>	<u>School</u>	<u>School</u>	<u>School</u>	<u>All Parents</u>	<u>School</u>	<u>School</u>	<u>School</u>
Total Respondents:	479	234	118	127	860	352	268	240	636	320	177	130	869	466	214	189	1,187	1,134	421	332
Need more AP classes/more challenging coursework/more access to Merlin	4%	4%	5%	0%	7%	10%	9%	2%	5%	6%	4%	3%	8%*	8%*	10%	5%*	7*	9*	5**	2
Improvements need in Math curriculum	1	0	2	0	6*	9*	6	1	9*	9*	13*	3	10*	9*	13*	9*	6*, **	7*	4**	5*
More focus on student's individual needs/improve school learning/experience	3	2	4	3	7*	5*	12*	5	4	3	4	3	4	4	4	4	3	3	5	3
Better administration/leadership/community relations/decision making	9	10	7	8	5*	8	2*	4	2*	1*	2*	5	3*	2*	6**	3	3*	2*	4*	6
Better organization/coordination/planning needed	1	1	2	1	14*	8*	11*	24*	4*	5	3	2	1**	2**	1	0**	2	3*	0	0*

* = Significant difference vs. Wave I at 90% confidence level.

** = Significant difference vs. Wave VIII at 90% confidence level.

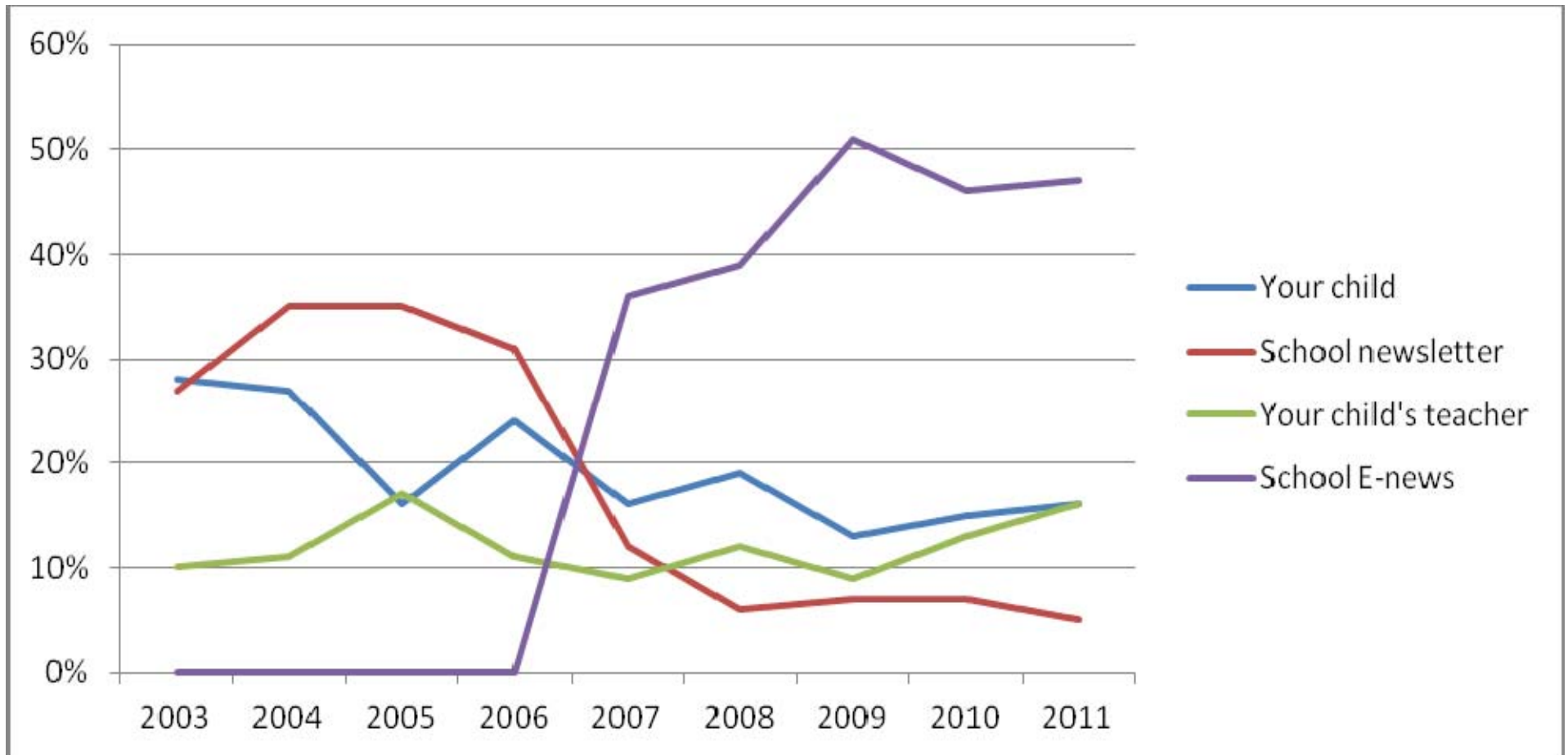
Q. What would you suggest as changes that might cause you to give the Issaquah School District a higher grade for next year?

Best Source of Information about Child's School

The School E-News continues to develop a strong, growing presence. School E-News is most frequently mentioned as the best source of information about the child's school—by approximately one out of two parents (47%) overall.

Best Source of Information about Child's School

(Top Sources during 2003- 2011)



Across school levels the School E-News is the most frequently mentioned best source of information.

Best Source of Information About Your Child's School

	Wave I (August 2003)				Wave VI (August 2008)				Wave VII (August 2009)				Wave VIII (August 2010)				Wave IX (August 2011)			
	<i>Parents of Children in:</i>				<i>Parents of Children in:</i>				<i>Parents of Children in:</i>				<i>Parents of Children in:</i>				<i>Parents of Children in:</i>			
	Elementary		Middle	High	Elementary		Middle	High	Elementary		Middle	High	Elementary		Middle	High	Elementary		Middle	High
	All Parents	School	School	School	All Parents	School	School	School	All Parents	School	School	School	All Parents	School	School	School	All Parents	School	School	School
Total Respondents:	479	234	118	127	860	352	268	240	636	320	177	139	869	466	214	189	1,887	1,134	421	332
School E-News	0%	0%	0%	0%	39%*	35%*	40%*	43%*	51%*	47%*	47%*	65%*	46%*, **	42%*	49%*	51%*, **	47%*	43%*	51%*	54%*
School Newsletter	27	27	31	24	6*	11*	3*	3*	7*	11*	5*	1*	7*	9*	6*	3*	5*	7*	5*	3*
Your Child	28	19	32	40	19*	8*	24*	30*	13*	8*	20*	15*	15*	10*	22*	21*	16*	11*	21*	24*
Your Child's Teacher	10	15	6	3	12	24*	4	3	9	14	3	2	13*, **	22*, **	4	2	16*, **	24*	5	4
Other Parents	13	16	8	13	8*	11	8	3*	6*	6*	7	6*	8*	10*, **	5	5*	5*, **	7*, **	4*	2*, **
Internet	3	3	4	2	7*	4	9*	9*	4	3	6	4	3	1*, **	6	7*	4	3**	7	6
Work/volunteer at school	8	10	8	4	2*	1*	1*	3	3*	4*	2*	1	2*, **	2*, **	2*	1	2*	2*	1*	2
PTA	1	3	0	0	1	1	2*	1	2	3	2*	3	2	1*	2*	2	1	1*	1	1
Media (Radio, Newspaper, TV)	#	0	0	1	1	0	1	2	0	0	0	0	0	0	0	0	0	0	0	0
District Newsletter	#	0	1	1	1	1	1	1	0	0	0	0	0	0	0	0	0	0	0	0
District E-News	0	0	0	0	2*	2*	3*	0	2*	2*	3*	1	2*	2*	2*	3*	2*	2*	3*	2*
Other Sources	4	3	6	5	3*	2	4	2	2*	2	4	1	2*	1*	3	4	2*	1*	2*	3

* = Significant difference at 90% confidence level vs. Wave I.

** = Significant difference at 90% confidence level vs. Wave VIII.

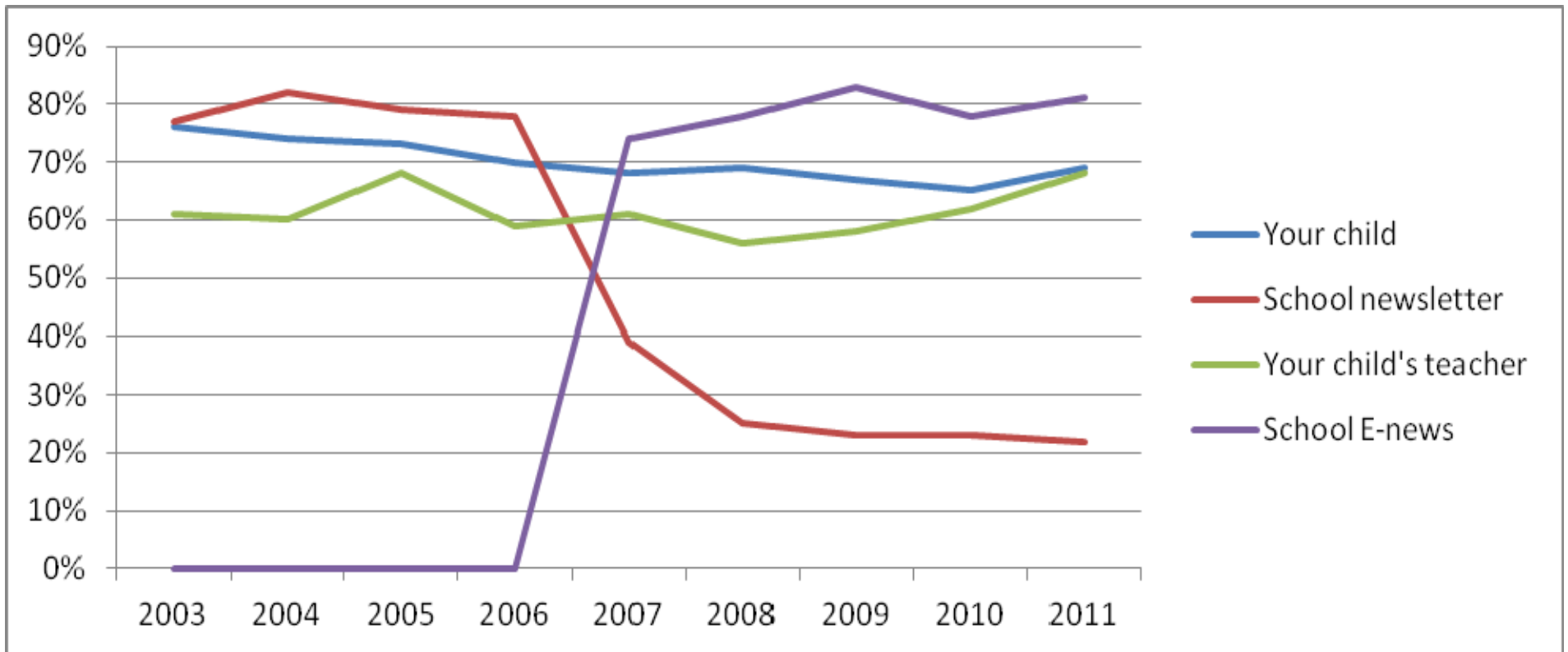
= Less than 1%

Q.What is your best source of information about your child's school?

All Sources of Information about Child's School

The vast majority of parents (81%) now use the School E-News as one of their sources of information about their child's school. Other frequently used sources of information about the child's school are the child (69%), the child's teacher (68%), other parents (52%), the Internet (41%) and the District E-News (40%).

All Sources of Information About Your Child's School (Top 4 Sources)



Across school levels, the School E-News is a key source of information about the child's school. Parents of Elementary School students (82%) continue to be especially likely to use their child's teacher as a source of information.

All Sources of Information About Child's School

	Wave I (August 2003)				Wave VI (August 2008)				Wave VII (August 2009)				Wave VIII (August 2010)				Wave IX (August 2011)			
	<i>Parents of Children in:</i>				<i>Parents of Children in:</i>				<i>Parents of Children in:</i>				<i>Parents of Children in:</i>				<i>Parents of Children in:</i>			
	All Parents	Elementary School	Middle School	High School	All Parents	Elementary School	Middle School	High School	All Parents	Elementary School	Middle School	High School	All Parents	Elementary School	Middle School	High School	All Parents	Elementary School	Middle School	High School
Total Respondents:	479	234	118	127	860	352	268	240	636	320	177	139	869	466	214	187	1,887	1,134	421	332
School E-News	0%	0%	0%	0%	78%*	77%*	81%*	77%*	83%*	80%*	82%*	90%*	78%*, **	75%*	82%*	81%*, **	81%*, **	78%*	85%*	87%*, **
School Newsletter	77	78	81	71	25*	36*	18*	17*	23*	29*	19*	12*	23*	30*	17*	10*	22*	27*	15*	15%*, **
Your Child	76	74	75	81	69*	55*	77	78	67*	58*	82	69*	65*	60*	74**	70*	69*	64*	75	77**
Your Child's Teacher	61	82	43	39	56*	81	40	38	58	76*	45	31	62	79	42	40**	68%*, **	82	51**	40
Other Parents	67	75	54	65	56*	58*	54	54*	55*	56*	57	50*	53*	57*	48%*, **	49*	52*	55*	48*	46*
District E-News	0	0	0	0	40*	37*	44*	40*	46*	42*	53*	47*	41%*, **	40*	38%*, **	46*	40*	37*	43*	46*
Internet	34	36	37	26	51*	45*	56*	55*	45*	37	54*	55*	41%*, **	33	49*	52*	41*	34	54*	51*
District Newsletter	24	22	25	25	9*	9*	9*	10*	7*	6*	9*	7*	5%*, **	5*	5*	4*	6%*, **	5*	7*	9%*, **
Media (Radio, Newspaper, TV)	18	14	21	23	7*	3*	10*	9*	7*	3*	8*	15*	5%*, **	3*	5*	9%*, **	5*	5*	7*	6*
Work/volunteer at school	10	12	10	5	2*	1*	2*	4	4*	6*	3*	2	3%*, **	3%*, **	3*	2	2*	2*	2*	3
PTA	4	5	4	2	4	4	3	4	7*	9*	5	8*	5**	6**	4	5	3**	3**	2	2**
Other Sources	7	6	8	8	5*	3*	7	4	4*	3*	7	6	5	3*	7	6	4*	3*	5*	5

* = Significant difference vs. Wave I at 90% confidence level.

** = Significant difference vs. Wave VIII at 90% confidence level.

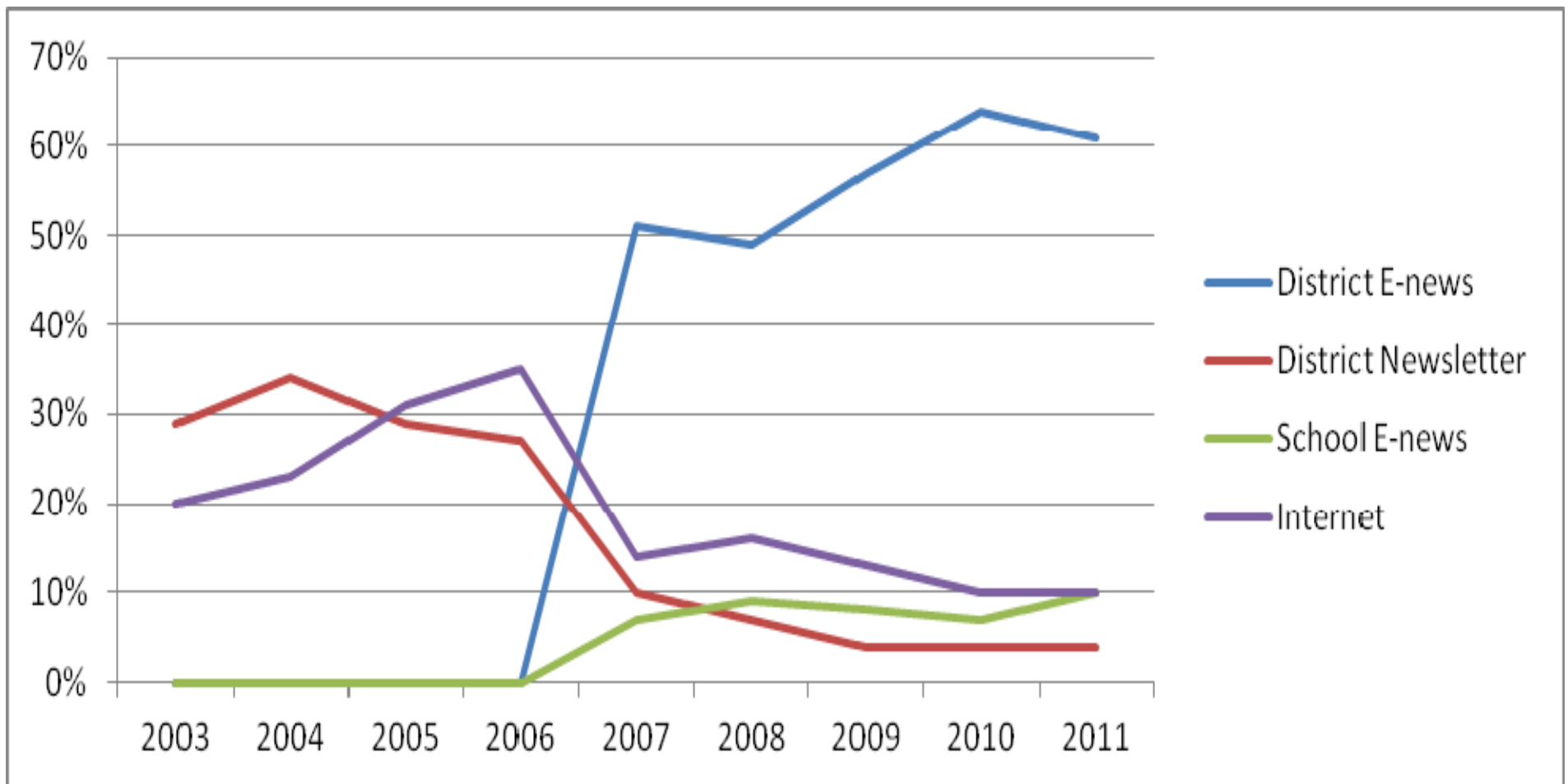
Q.What is your best source of information about your child's school? What are other important sources of information about your child's school?

Best Source of Information about Issaquah School District

The District E-News is now the most popular source of information about the District. Currently approximately six in ten parents (61%) consider it to be their best source of information about the District. At the same time other sources of information declined in popularity.

Best Source of Information About School District

(Top 4 Sources)



Across school levels, the District E-News is the prevalent source of information about the Issaquah school district.

Best Source of Information About the Issaquah School District

	Wave I (August 2003)				Wave VI (August 2008)				Wave VII (August 2009)				Wave VIII (August 2010)				Wave IX (August 2011)				
	<i>Parents of Children in:</i>				<i>Parents of Children in:</i>				<i>Parents of Children in:</i>				<i>Parents of Children in:</i>				<i>Parents of Children in:</i>				
	Elementary		Middle	High	Elementary		Middle	High	Elementary		Middle	High	Elementary		Middle	High	Elementary		Middle	High	
	All Parents	School	School	School	All Parents	School	School	School	All Parents	School	School	School	All Parents	School	School	School	All Parents	School	School	School	
Total Respondents:	479	234	118	127	860	352	268	240	636	320	177	139	869	466	214	189	1,187	1,134	421	332	
District E-News	0%	0%	0%	0%	49%*	55%*	44%*	46%*	57%*	61%*	52%*	56%*	64%*,**	67%*,**	61%*,**	57%*	61%*	62%*,**	60%*	62%*	
District Newsletter	29	25	33	33	7*	7*	6*	8*	4*	4*	5*	4*	4*	3*	2*	8*	4*	3*	5**,**	8*	
Internet	20	23	25	10	16*	15*	16	17*	13*	14*	13*	9	10*	10*	10*	11	10*	10*	11*	9	
Media (radio, newspaper, tv)	16	16	14	17	2*	1*	3*	3*	2*	2*	1*	2*	2*	1*	3*	2*	1**,**	1*	1**,**	1*	
Other parents	13	17	9	12	8*	7*	9	7*	6*	6*	7	7	5*	5*	6	4*	4*	4*	5*	2*	
School Newsletter	6	7	4	7	2*	1*	2*	2	1*	2*	1*	0*	1*	2*	1*	1*	2**,**	4**,**	1*	0*	
School E-News	0	0	0	0	9*	8*	11*	8*	8*	7*	9*	10*	7*	7*	9*	6*	10**,**	11**,**	9*	9*	
Your child	2	0	4	5	3	1	3	3	3	1	5	3	2	0	3	3	3**,**	2**,**	3	4	
PTA	2	3	0	2	1	1*	2	1	1	1*	1	2	1	1*	1	2	0*	1*	0	0**	
Work/volunteer at school	4	3	4	5	1*	1*	0*	3	1*	1*	1	0*	1*	0**,**	1	1*	1*	1*	1*	0*	1*
Your child's teacher	1	1	2	1	2	2	2	1	2	2	2	1	1	2	1	1	2	2	2	2	1
Other Sources	4	3	4	5	2*	1*	2	2	2*	1*	2	4	2*	2	1*	5	1**,**	1*	1*	3	

* = Significant difference vs. Wave I at 90% confidence level.

** = Significant difference vs. Wave VIII at 90% confidence level.

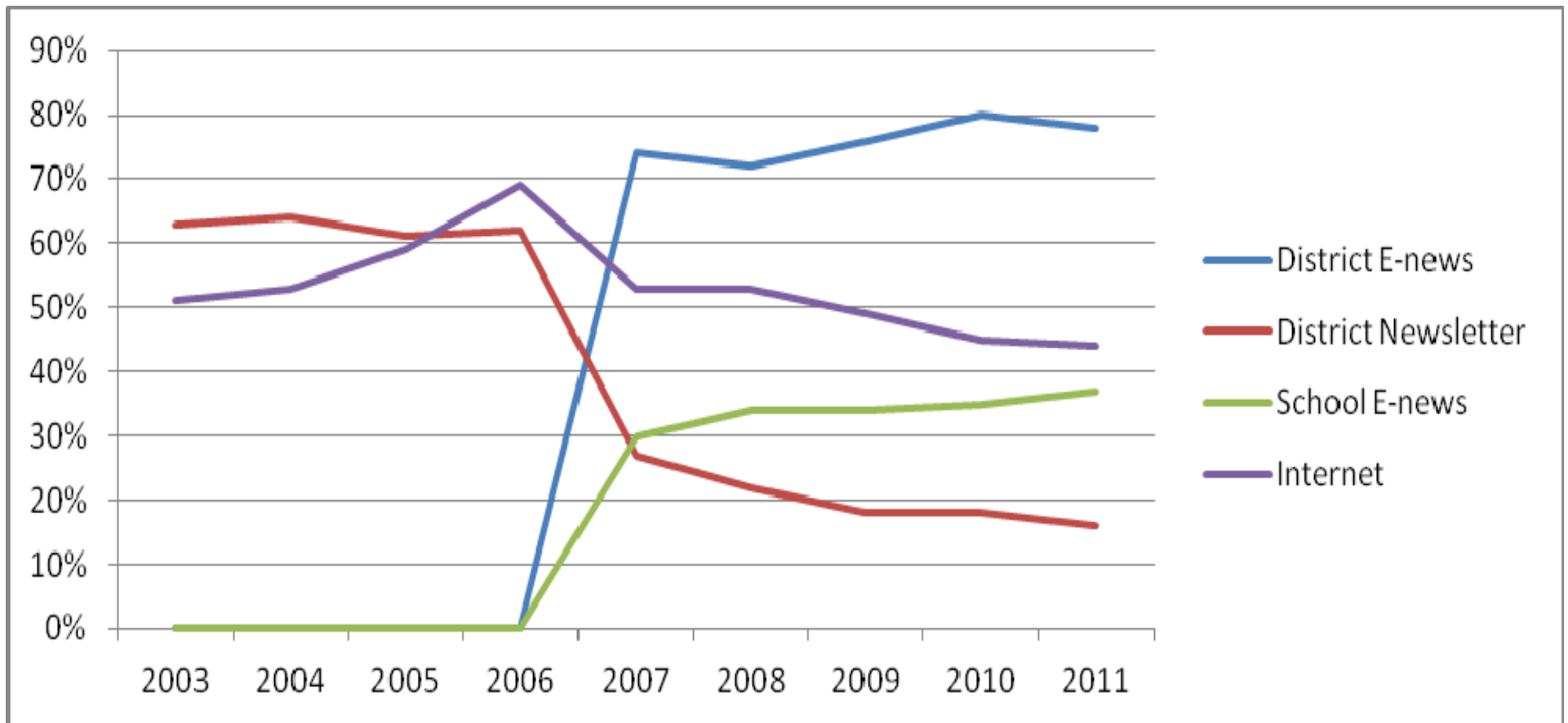
Q. What is your best source of information about the Issaquah School District?

All Sources of Information about Issaquah School District

With regard to all sources of information about the District, the District E-News is now the major source of information with approximately four out of five (78%) parents using it.

All Sources of Information About School District

(Top 4 Sources)



Across school levels, the District E-News is now the predominant source of information for parents.

All Sources of Information About the Issaquah School District

	Wave I (August 2003)				Wave VI (August 2008)				Wave VII (August 2009)				Wave VIII (August 2010)				Wave IX (August 2011)			
	<i>Parents of Children in:</i>				<i>Parents of Children in:</i>				<i>Parents of Children in:</i>				<i>Parents of Children in:</i>				<i>Parents of Children in:</i>			
	All Parents	School	School	High	All Parents	School	School	High	All Parents	School	School	High	All Parents	School	School	High	All Parents	School	School	High
Total Respondents:	479	234	118	127	860	352	268	240	636	320	177	139	869	466	214	189	1,187	1,134	421	332
District E-News	0%	0%	0%	0%	72%*	75%*	72%*	69%*	76%*	78%*	71%*	78%*	80%*,**	82%*	79%*,**	77%*	78%*	79%*	75%*	78%*
District Newsletter	63	64	66	59	22*	21*	18*	27*	18*	18*	17*	22*	18*	19*	14*	17*	16*	15**,**	14*	19*
Other parents	56	55	60	54	47*	44*	52	46*	44*	43*	46*	44*	40**,**	42*	38*	36*	40*	40*	40*	40*
Internet	51	55	60	39	53	50	52	57*	49	48	52	48*	45**,**	42**,**	46*	50*	44*	41*	48	47*
Media (radio, newspaper, TV)	47	46	51	47	20*	15*	23*	23*	24*	20*	29*	30*	17**,**	13**,**	19**,**	25*	16*	13*	17*	23*
School Newsletter	32	32	33	30	11*	11*	13*	9*	11*	13*	8**,**	7*	10*	13*	8*	5*	12**,**	14*	10*	7*
School E-News	0	0	0	0	34*	30*	38*	35*	34*	33*	39	30*	35*	33*	40*	34*	37*	37*	39*	36*
Your child's teacher	28	32	25	26	25	27	24	23	21*	23*	22	14*	22*	24*	22	15*	26**	29**	26	19
Your child	18	13	18	28	21	12	27*	26*	17	11	23*	24*	17	10	27*	21*	20**	16**	29*	21*
Work/Volunteer at School	4	4	4	6	2*	1*	0*	4	2*	1*	2	2	1*	0*	2	2	1*	1*	1*	1*
PTA	3	4	3	2	3	3	4	3	5*	5	4	7*	3**	2**	2	4	2	2*	2	2
Other	5	5	4	6	4	3*	4	5	4	3*	5	7	4	3	2	6	2**,**	2**,**	2*	5

* = Significant difference vs. Wave I at 90% confidence level.

** = Significant difference vs. Wave VIII at 90% confidence level.

Q.What is your best source of information about the Issaquah School District? What are other sources of information about the Issaquah School District?