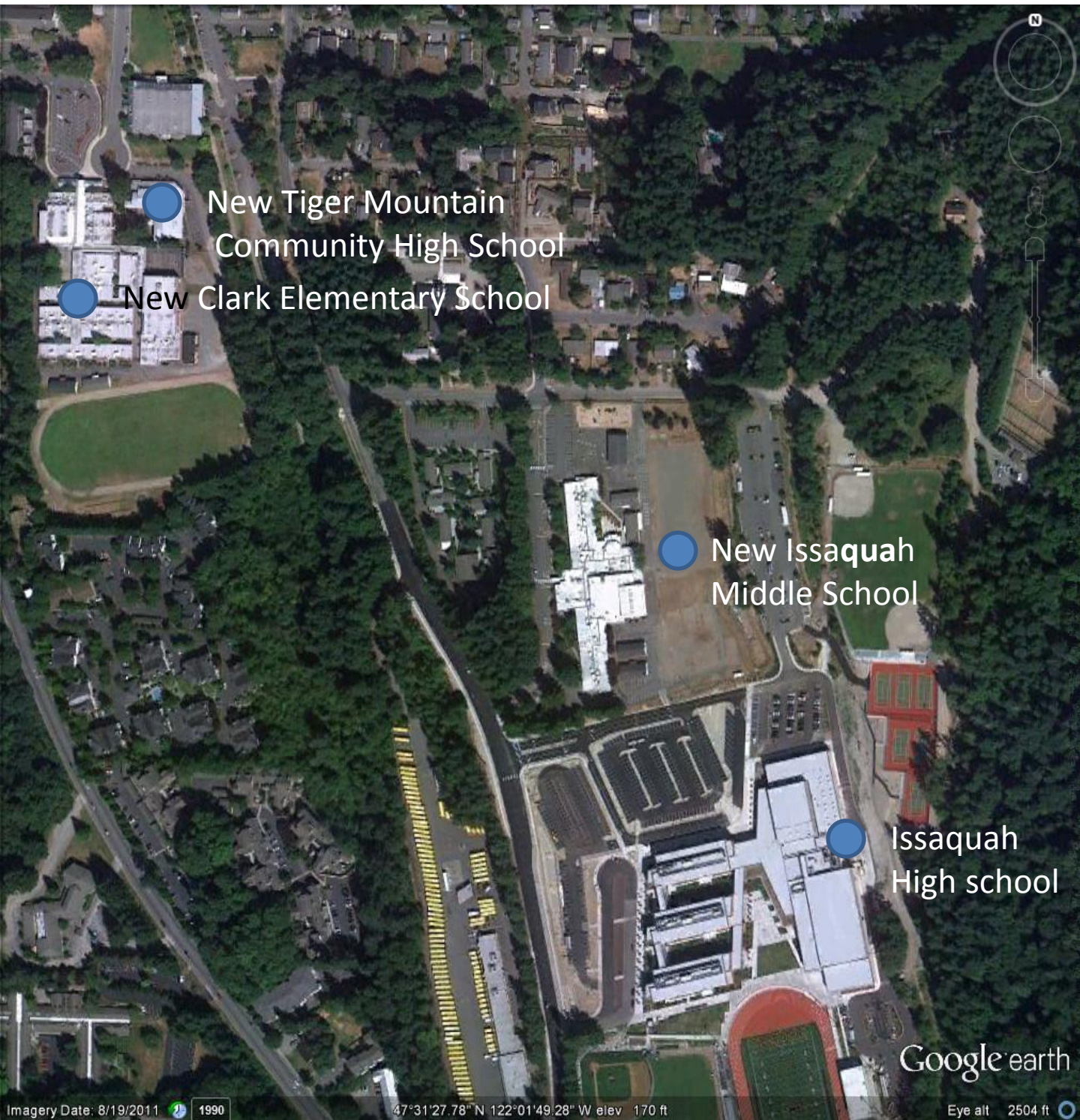


## Core Area Existing School Campus Plan

Issaquah Middle School, Clark Elementary School and Tiger Mountain Community High School



## Core Area School Relocation Concept Plan

Issaquah Middle School, Clark Elementary School and Tiger Mountain Community High School

new football field + track

Existing Clark Elementary School

New Issaquah Middle School

Existing Tiger Mountain Community High School

new parking

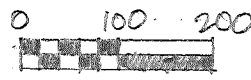
new softball field - interim parking/staging  
EXISTING FIELDS TO REMAIN  
existing parking use for IMS + drop-off

2ND AVENUE

Issaquah High School

BUILD NEW ISSAQUAH MIDDLE SCHOOL - RELOCATE CLARK ELEMENTARY & TIGER MOUNTAIN COMMUNITY HIGH SCHOOL TO CURRENT IMS SITE (see Clark/Tiger Mtn plan)

**CONCEPT PLAN**



ISD TRANSPORTATION CENTER TO REMAIN

EXISTING FIELD TO REMAIN

EXISTING TRACKFIELD AND STADIUM TO REMAIN

NEW BUILDING

EXISTING UTILITY REASSEMBLY

NEW PARKING

NEW BUS LANE

NEW PARKING

PHASE 3

PHASE 2

PHASE 1

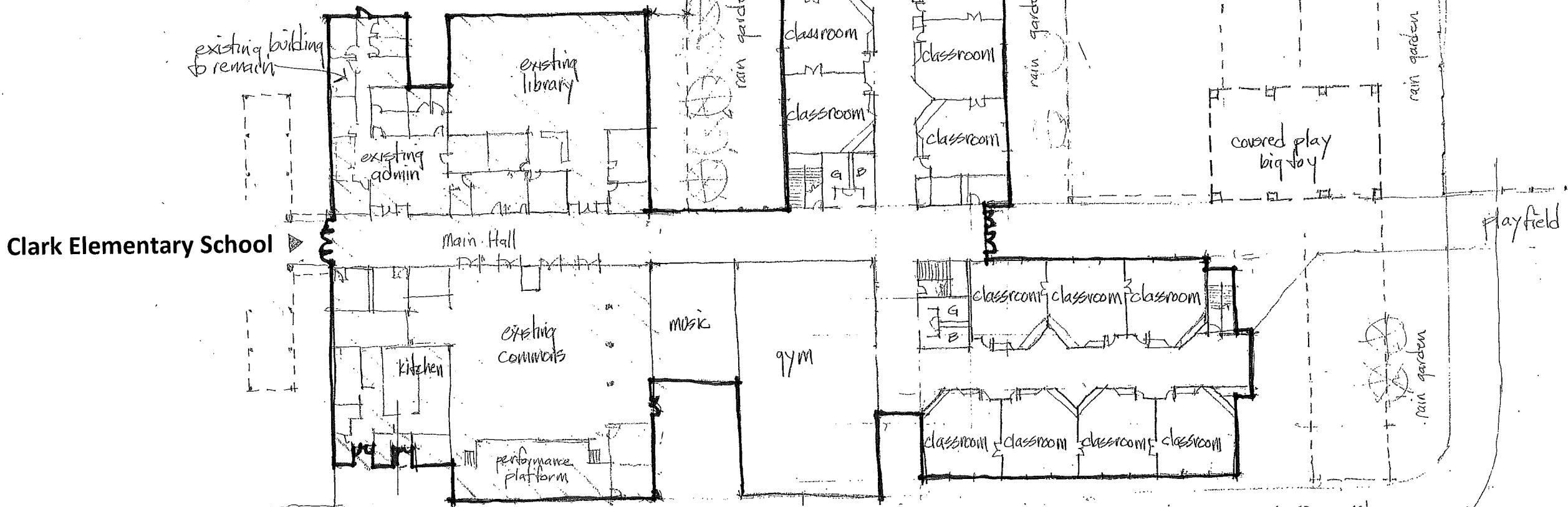
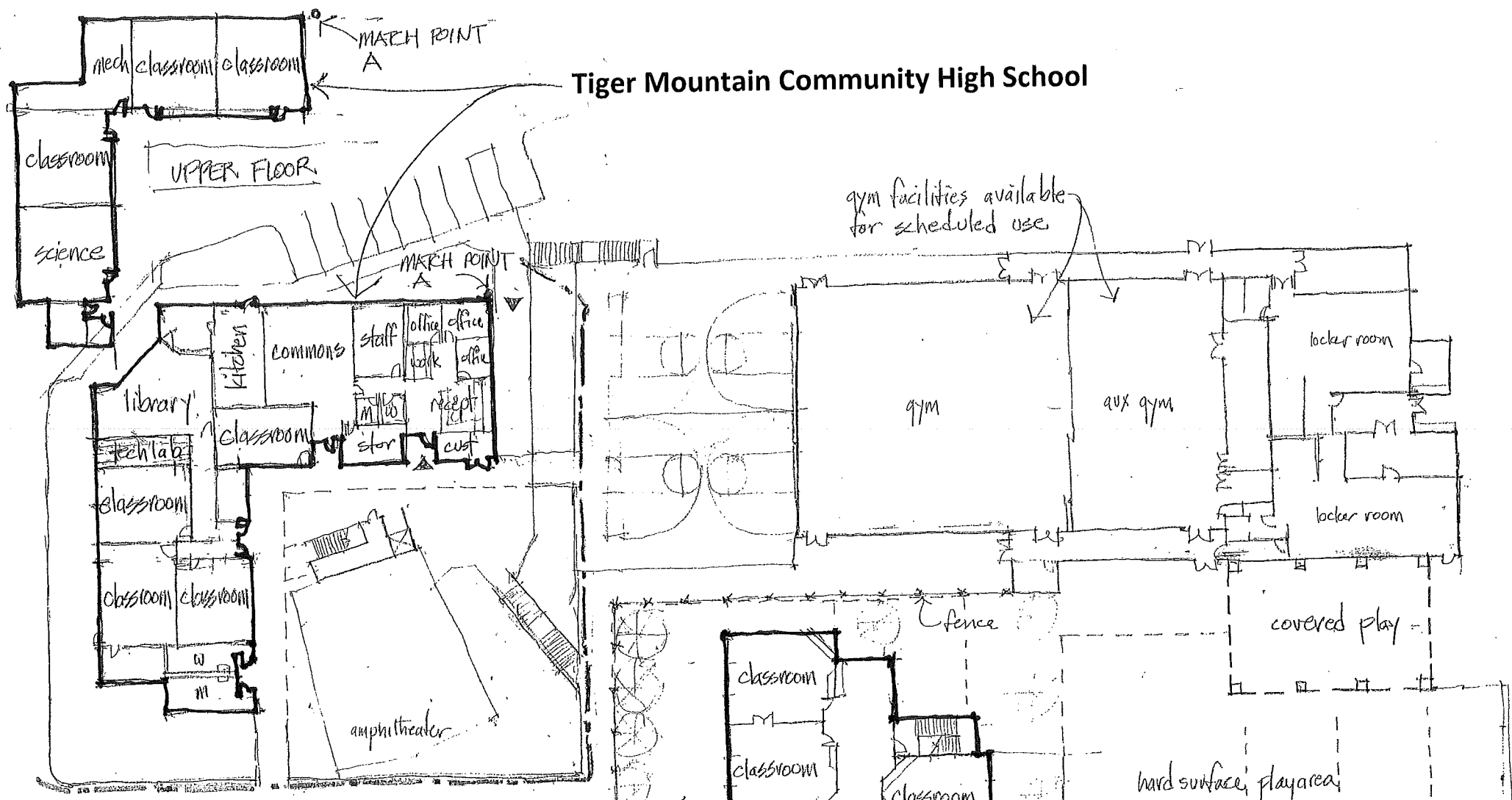
NEW TENNIS COURTS

bus loop

PROPOSED

EVANS STREET

Tiger Mountain Community High School



Clark Elementary School

**CONCEPT PLAN**

Issaquah Middle School – Reconfigure for Clark Elementary and Tiger Mountain Community High School

