



Skyward (Family Access)

Created a New Email Today? Wait a Week

1: Open Web Browser



2: Go to

<http://www.issaquah.wednet.edu/family/FamilyAccess>



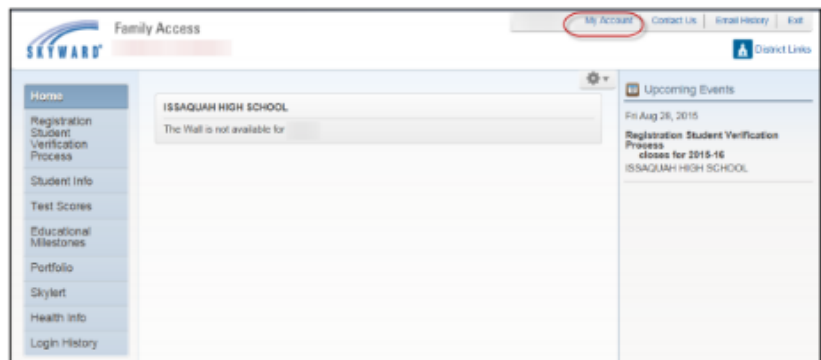
3: Login with Login ID and Password



Forgot Login or Password?
Click on "Forgot Login/Password"
Check Your Email

To Change Language Settings

1: Click on "My Account"



2: Select "Show Google Translator" and Click "Save"



3: Find "Select Language" Tab and Click on Arrow to Select Language from Menu





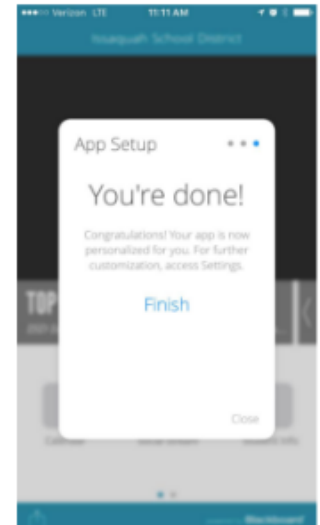
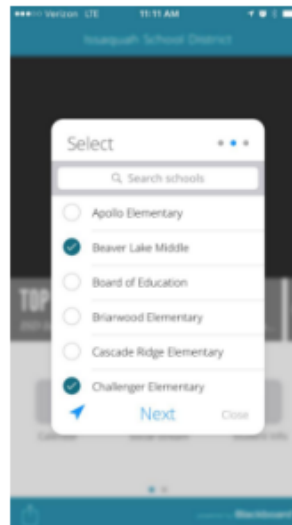
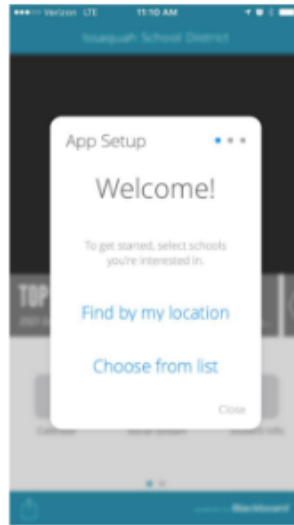
Issaquah School District App

1: Download App on Phone/ Tablet

2: "Choose from list"

3: Select School/s

4: "Finish"



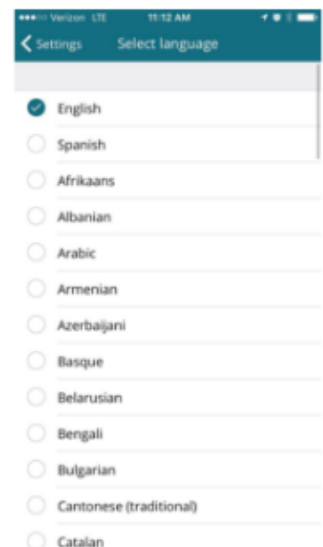
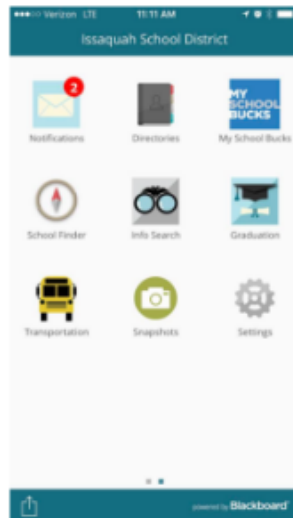
To Change Language Settings

1: Swipe to 2nd Screen

2: Select Settings

3: "Select Language"

4: Select Language

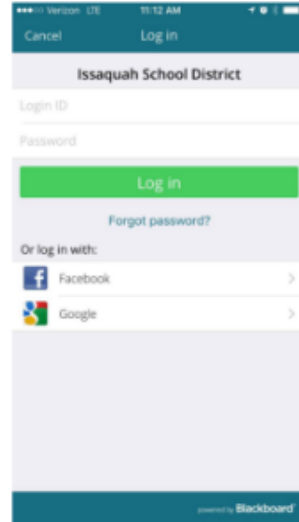


To Access Student Information (Grades, Attendance)

1: "Student Info"



2: Login to Skyward



Your Student or Students will be added

Click on the student's name to view information (grades, assignments, attendance, account balance)

Note:

Student information is NOT translated in the ISD app

Go to Skyward "Family Access" online for translation