

Parent Study Results

August 2003 - August 2015

**Prepared by: Dorothy Geraghty
Sammamish, WA**

October 2015

Table of Contents

	<u>Page</u>
Background/Research Design	3
Scope of Report	5
Summary of Findings	6
Detailed Findings	
Grade given to neighborhood school	9
Reasons for grades	11
Suggested changes for school	15
Grades given to Issaquah School District	17
Reasons for grades	19
Suggested changes for Issaquah School District	23
Best source of information about child's school	25
All sources of information about child's school	27
Best source of information about the Issaquah School District	29
All sources of information about the Issaquah School District	31
Whether currently donate to ISF	33
If don't donate to ISF, why not	33
Whether annual December parent-teacher conference is productive and of value	35

Background/Research Design

The Issaquah School District has conducted a Parent web survey among parents of its Elementary, Middle School and High School students each Summer for thirteen years—from August 2003 through August 2015. The primary purpose of this study is to give all parents an opportunity to tell the District about:

- Their current satisfaction levels with the performance of the school that their oldest child attends and with the Issaquah District
- Reasons for current satisfaction levels
- Changes that parents desire at the school and district level

Additionally, learning is obtained regarding how parents are now receiving information about their child's school and the District. When the District adds a new source, such as District E-News, its impact is tracked.

The results of these studies are used as input for:

- assessing school and District performance
- planning improvements in Issaquah's schools and the Issaquah District overall.

Please note that the sample is self selected and does not necessarily represent all parents in the District. All parents in the District are invited to participate in this study and the respondents are the ones who choose to participate. Importantly, all parents in the District are provided with the opportunity to give the District their input in this annual study.

The District also conducts a Community Polling study by telephone where respondents are selected randomly with age and sex quota groups so that the sample is representative of parents in the District. In this study the District obtains learning from residents of the community without children attending District schools as well as parents of students. The results of this study are covered in a separate report.

Significantly more parents participated in this study during the past three years than in the past. The breakdown of the sample by grade level of the oldest child attending school is:

Number of Parents Participating

	<u>2003</u>	<u>2004</u>	<u>2005</u>	<u>2006</u>	<u>2007</u>	<u>2008</u>	<u>2009</u>	<u>2010</u>	<u>2011</u>	<u>2012</u>	<u>2013</u>	<u>2014</u>	<u>2015</u>
Elementary School	234	175	217	230	435	352	320	466	1,134	489	2,883	2,930	3,617
Middle School	118	68	75	108	181	268	177	214	421	376	1,491	1,459	1,855
High School	127	76	84	148	117	240	139	189	332	293	1,365	1,322	1,565
Total	479	319	376	486	733	860	636	869	1,887	1,158	5,739	5,711	7,037

The subtotals do not always add up to the totals in the survey results because a few parents chose not to respond to all the questions. This is typical in surveys and happened infrequently in this study. Also responses do not always add up to 100% due to rounding. Instead at times they add up to 99% or 101%.

Statistically significant differences in responses at the 90% confidence level are noted.

Scope of Report

This study includes questions on:

- Grade oldest child attends
- Attendance area for oldest child
- Letter grade given to oldest child's school
- Why grade was given
- Changes suggested for school
- Letter grade given to Issaquah school district
- Why grade was given
- Changes suggested for district
- Best source of information about child's school
- All sources of information about child's school
- Best source of information about Issaquah School District
- All sources of information about Issaquah School District
- Whether donate to ISF
- If don't donate, why not
- Whether annual December parent-teacher conference is productive and of value

Please note that with regard to the open-end responses (e. g., reasons for grades given) this report covers the responses given by 5% or more of the parents overall during the recent past.

Summary of Findings

- Issaquah District has held on to the higher grades that it achieved in recent years vs. 2003 (the baseline year).
 - Approximately nine in ten parents (89%) now give their oldest child's neighborhood **school** an A or B grade, which is comparable to the levels achieved in 2014 (88%) and 2013 (88%) and significantly more than in 2003 (71%).
 - The high number of parents giving their child's **school** an "A" (47% in 2015) has also continued. This is comparable to the levels achieved in 2014 (46%) and 2013 (46%) and significantly higher than in 2003 (23%).
 - Approximately nine in ten parents (89%) give the **District's** performance an A or B grade, which is comparable to the levels achieved in 2014 (90%) and 2013 (89%) and significantly more than in 2003 (33%). The increased level of "A" grades given to the District has also continued, growing to 44% in 2015, 2014 and 2013 (vs. 35% in 2012 and 6% in 2003).
- Although the level of parents with suggestions for **their child's school** is still high (71%), it is significantly lower than in 2014 (77%) and 2013 (75%). It is also lower than in 2003 (85%), the baseline year.
- The requested improvements from parents for their child's **school** continue to be diverse and made by a small minority. The most frequent requests continue to be...
 - *Improve communication to parents from teacher/school administration/provide more timely information* (13%), which is comparable to 2014 (12%).
 - *Better teachers needed/better teacher-student relations* (10%), which is comparable to 2014 (9%).
 - Unhappy with program cuts/reinstate music programs (5%) vs. 6% in 2014.
 - Need more AP classes/more challenging coursework/access to Merlin (5%), which is the same as 2014 (5%).

- The decline in number of parents suggesting changes in the District has continued. Approximately half of parents (55%) suggest some change or improvement **in the District**, which is significantly fewer than in recent years; i.e., 2014 (59%), 2013 (64%), 2012 (70%), or 2011 (75%).

- The requests for change or improvements at the District level continue to be diverse with none suggested by more than a small minority of parents. The most frequently made requests are...
 - *Improve communications to parents from teachers/administrators/provide more timely information* (8%)

 - *Unhappy with program cuts/reinstate music programs* (5%)

- The School E-News has become a primary source of information for parents. It is now considered the *best* source of information about their child's school by four in ten parents overall (40%), which is comparable to the levels in 2014 (41%) and 2013 (41%). Other primary sources that are most frequently mentioned are their child (22%) and their child's teacher (19%). Approximately three out of four parents (73%) now consider the School E-News to be one of their sources of information about their child's school.

- During the past year, the District E-News has also had a strong presence. It is now considered the *best* source of information about the District by more than half of parents (54%), which is slightly lower than the number of parents who felt this way in 2014 (58%) and 2013 (58%). In the distance, the next most frequently considered best sources of information about the District are the School E-News (13%) and the Internet (9%). The District E-News is now used by approximately seven in ten parents (69%) as one of their sources of information about the District.

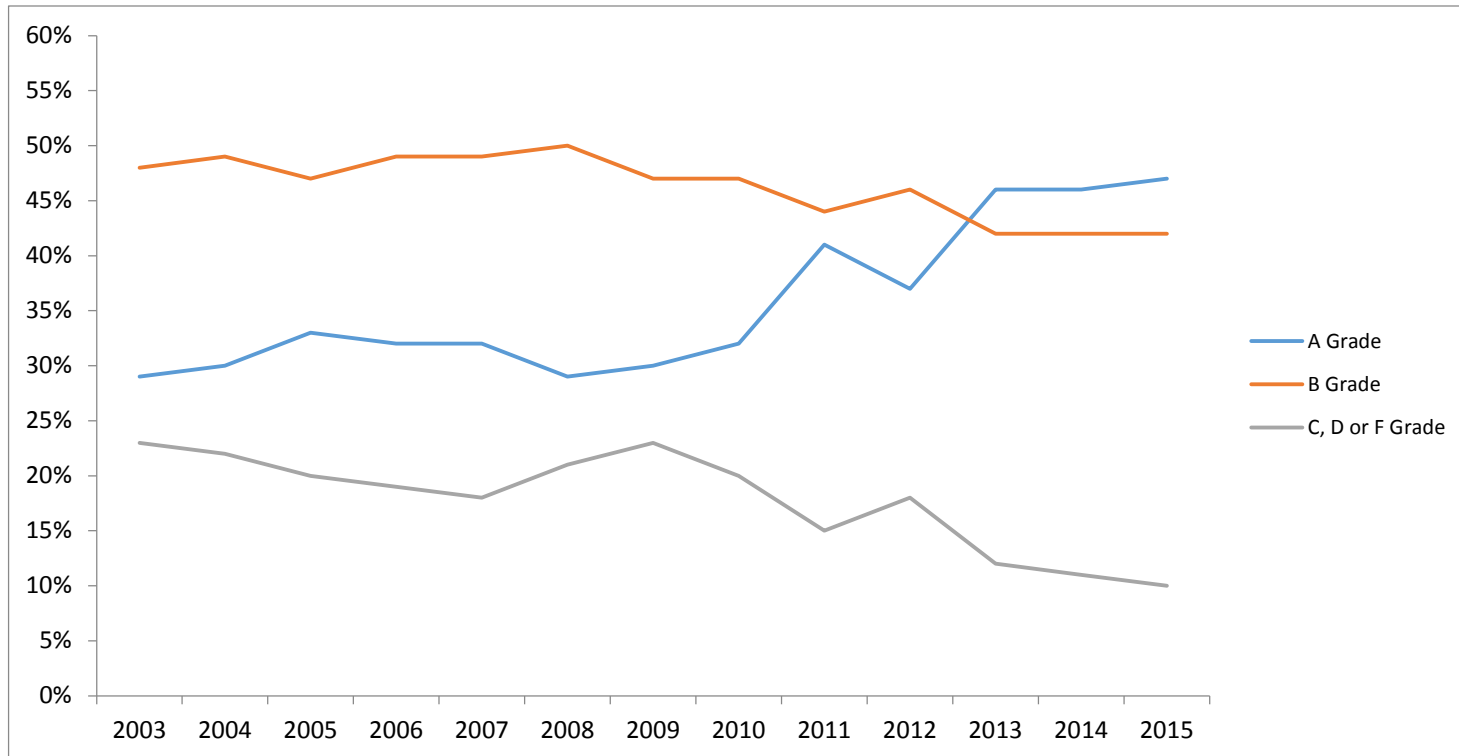
- Approximately six in ten (63%) of these parents say that they currently donate to the ISF. This is being reported by parents of Elementary School students and parents of Middle School/High School students.
- The primary reason given for not donating is that they give to the PTSA (50%). Parents of Elementary School students (55%) are more likely to say this than parents of Middle/High School students (44%). Other reasons given by parents overall are:
 - - I don't understand how it benefits my child (12%),
 - I don't see the need for additional funding (9%)
 - I didn't know about the Foundation (9%)
- Four out of five (81%) of parents of Elementary School student strongly agree (40%) or agree (41%) that the annual December Parent –Teacher Conference is productive and of value to them.

Detailed Findings

Grade Given to Neighborhood School

As the chart below illustrates, almost all parents give their child's school an A or B grade. The gains achieved in 2014 in "A" grades have been maintained. Nine in ten parents (89%) now give their child's school an "A" or "B" grade--47% give their child's school an "A" grade, and 42% give a "B" grade. Only 10% give a "C" or lower grade.

GRADE GIVEN TO NEIGHBORHOOD SCHOOL OF OLDEST CHILD



Q. What grade would you give the school your oldest child attended in 2014-2015?

Parents of Elementary school students continue to tend be more likely to give their child’s school an “A” grade than parents of older students. Parents of High School students are the least likely to give an A grade.

Grade Given to School by Year

	Wave I (August 2003)				Wave X (August 2012)				Wave XI (August 2013)				Wave XII (August 2014)				Wave XIII (August 2015)			
	<i>Parents of Children in:</i>				<i>Parents of Children in:</i>				<i>Parents of Children in:</i>				<i>Parents of Children in:</i>				<i>Parents of Children in:</i>			
	Elementary	Middle	High		Elementary	Middle	High		Elementary	Middle	High		Elementary	Middle	High		Elementary	Middle	High	
	All Parents	School	School	School	All Parents	School	School	School	All Parents	School	School	School	All Parents	School	School	School	All Parents	School	School	School
Total Respondents	479	234	118	127	1,158	489	376	293	5,739	2,883	1,491	1,365	5,711	2,930	1,459	1,322	7,037	3,617	1,855	1,565
Grade given:																				
A	23%	31%	22%	10	37%*	45%*	35%*	25%*	46%*	53%*	44%*	34%*	46%*	53%*	42%*	36%*	47%*	53%*	46%*,**	34%*
B	48	47	57	43	46	41	47	52	42*	39*	46*	47	42*	38*	46*	48*	42*	39*	42%*,**	49
C	21	19	14	31	14	11*	15	17*	9*	7*	8*	14*	9*	7*	10*	13*	9*	7*	10*	14*
D	6	3	6	13	3*	2	2*	4*	2*	1*	2*	4*	2*	1	2*	2*	1*	1*	2*	2*
F	2	0	2	4	1	1	1*	1	1*	1	1*	1*	0	1	0*	1*	0*	0	0*	1*

* = Significant difference from Wave I at the 90% confidence level.

** = Significant difference from Wave XII at the 90% confidence level.

Q. What grade would you give the school your oldest child attended in 2014-2015?

Positive Reasons Given for Grade

As the following tables detail, when parents give their reasons for the grade they gave their child's school, six in ten (61%) mention something positive—which is the same as in 2014 and 2013 (61%) and significantly more than when this study began in 2003 (51%). Parents of Elementary school students continue to be especially likely to mention something positive.

Across school levels, the most frequently given positive reasons still concern...

- the school experience (30%)
- the teacher (24%)
- the Administration/staff (9%)
- the quality of programs/curriculum (8%)
- good parental involvement/support (5%)
- positive environment (5%)
- good/like Principal/good leadership (5%)

Positive Reasons for Grade Given School

	Wave I (August 2003)				Wave X (August 2012)				Wave XI (August 2013)				Wave XII (August 2014)				Wave XIII (August 2015)			
	<i>Parents of Children in:</i>				<i>Parents of Children in:</i>				<i>Parents of Children in:</i>				<i>Parents of Children in:</i>				<i>Parents of Children in:</i>			
	Elementary	Middle	High		Elementary	Middle	High		Elementary	Middle	High		Elementary	Middle	High		Elementary	Middle	High	
	All Parents	School	School	School	All Parents	School	School	School	All Parents	School	School	School	All Parents	School	School	School	All Parents	School	School	School
Total Respondents:	479	234	118	127	1,158	489	376	293	5,739	2,883	1,491	1,365	5,711	2,930	1,459	1,322	7,037	3,617	1,855	1,565
<u>Mentioned something positive</u>	<u>51%</u>	<u>63%</u>	<u>47%</u>	<u>27%</u>	<u>56%*</u>	<u>66%</u>	<u>52%</u>	<u>47%*</u>	<u>61%*</u>	<u>68%</u>	<u>57%*</u>	<u>53%*</u>	<u>61%*</u>	<u>68%</u>	<u>55%*</u>	<u>52%*</u>	<u>61%*</u>	<u>65%**</u>	<u>55%*</u>	<u>54%*</u>
Satisfied with the school/experience	18	22	17	10	17	18	17	15	21*	27*	17	13	26*	30*	23*	20*	30*,**	30*	31*,**	29*,**
Like teacher/quality of teacher	25	36	19	9	26	34	23	19*	25	30*	23	15*	25	31*	20	19*	24	29*	20	17*
Positive about administration/good staff	10	13	8	5	10	12	9	9	9	11	8	4	9	12	7	6	9	10	8	6
Quality of programs/curriculum	15	21	13	8	6*	7*	4*	5	9*	9*	10	9	8*	5*	10	12	8*	8**,**	6**,**	8**
Positive environment	2	0	4	2	2	2	2	2	4	5	2	4	4	6	4	2	5*	6*	2	5
Good parental involvement/support/communication	7	12	5	2	5*	7*	3	1	5*	8*	3	2	5*	6*	5	2	5*	6*	6	2
Good/like principal/good leadership	5	9	3	1	5	8	5	0	5	6	7*	2	4	6	4	2	5	7	3	1

* = Significant difference vs. Wave I at the 90% confidence level.

** = Significant difference vs. Wave XII at the 90% confidence level.

Note: All other positive reasons mentioned by less than 5% of parents.

Q. Why did you give this grade?

Negative Reasons for Grade Given to School

For the past three years, fewer parents mention a negative reason for the grade they give their child's school than in 2012 or when this study began in 2003—40% in 2015, 40% in 2014 and 42% in 2013 vs 52% in 2012 and 65% in 2003.

Parents of Elementary school students continue to tend to be less likely to mention something negative than parents of older students.

The negative comments continue to be diverse with very few mentioned by 5% or more parents.

The most frequently given negative reasons for the grade given continues to be...

- *Better teachers needed/better teacher-student relations.* Overall, 8% of parents mention this, with parents of High School students (14%) continuing to be especially likely to say this.
- *Improve communication from teachers/Administration improve/provide/more timely information* which 6% of parents mention overall and for all school levels.

Negatives Reasons Given for Grade Given to School

	Wave I (August 2003)				Wave X (August 2012)				Wave XI (August 2013)				Wave XII (August 2014)				Wave XIII (August 2015)			
	Parents of Children in:				Parents of Children in:				Parents of Children in:				Parents of Children in:				Parents of Children in:			
	Elementary	Middle	High		Elementary	Middle	High		Elementary	Middle	High		Elementary	Middle	High		Elementary	Middle	High	
	All Parents	School	School	School	All Parents	School	School	School	All Parents	School	School	School	All Parents	School	School	School	All Parents	School	School	School
Total Respondents:	479	234	118	127	1,158	489	376	293	5,739	2,883	1,491	1,365	5,711	2,930	1,459	1,322	7,037	3,617	1,855	1,565
<u>MENTIONED SOMETHING NEGATIVE/IMPROVEMENT NEEDED</u>	<u>65%</u>	<u>56%</u>	<u>64%</u>	<u>84%</u>	<u>52%*</u>	<u>43%*</u>	<u>55%*</u>	<u>65%*</u>	<u>42%*</u>	<u>37%*</u>	<u>45%*</u>	<u>50%*</u>	<u>40%*</u>	<u>31%*</u>	<u>45%*</u>	<u>51%*</u>	<u>40%*</u>	<u>36%*,**</u>	<u>40%*</u>	<u>48%*</u>
<u>Mentioned communications:</u>	<u>10%</u>	<u>5%</u>	<u>14%</u>	<u>13%</u>	<u>7%</u>	<u>6%</u>	<u>8%*</u>	<u>8%</u>	<u>6%*</u>	<u>5%</u>	<u>7%*</u>	<u>7%*</u>	<u>6%</u>	<u>5%</u>	<u>7%</u>	<u>7%</u>	<u>6%*</u>	<u>6%</u>	<u>6%*</u>	<u>6%*</u>
Improve communication to parents from teachers/administration/provide more timely information	7	4	9	9	7	6	8	8	6	4	7	7	6	5	7	7	6	6	6*	5
Need to listen to parents/community/solicit input	3	1	5	6	1*	1	0*	0*	0*	1	0*	0*	0*	0*	0*	0*	0*	0*	0*	1*
<u>Mentioned other reason:</u>																				
Better teachers needed/better teacher-student relations	8	4	8	15	15*	8*	18*	25*	7	5	8	13	8	4	10	12	8	4	9	14

* = Significant difference vs. Wave I at 90% confidence level.

** = Significant difference vs. Wave XII at the 90% confidence level.

Note: All other negative reasons were mentioned by less than 5% of parents.

Q. Why did you give this grade?

Suggested Changes for Child's School

The vast majority of parents (71%) continue to suggest a change/improvement in their child's school, but this is significantly fewer than in 2014 (77%) or 2003 (85%).

The changes suggested continue to be diverse with only a small minority suggesting any one improvement.

The most frequently suggested changes continue to be:

- *Improve communications to parents from teachers/administration/provide more timely information (13%)*
- *Better teachers needed/better teacher-student relations (10%)*
- *Unhappy with program cuts/reinstate music programs (5%)*
- *Need more AP classes/more challenging coursework/access to Merlin (5%)*

Suggested Changes for School

	Wave I (August 2003)				Wave X (August 2012)				Wave XI (August 2013)				Wave XII (August 2014)				Wave XIII (August 2015)			
	<i>Parents of Children in:</i>				<i>Parents of Children in:</i>				<i>Parents of Children in:</i>				<i>Parents of Children in:</i>				<i>Parents of Children in:</i>			
	All Parents	School	School	High	All Parents	School	School	High	All Parents	School	School	High	All Parents	School	School	High	All Parents	School	School	High
Total Respondents:	479	234	118	127	1,158	489	376	293	5,739	2,883	1,491	1365	5,711	2,930	1,459	1,322	7,037	3,617	1,855	1,565
<u>SUGGESTED A CHANGE</u>	<u>85%</u>	<u>84%</u>	<u>86%</u>	<u>87%</u>	<u>79%*</u>	<u>73%*</u>	<u>81%*</u>	<u>85%</u>	<u>75%*</u>	<u>73%*</u>	<u>75%*</u>	<u>80%</u>	<u>77%*</u>	<u>75%*</u>	<u>77%*</u>	<u>79%</u>	<u>71%*,**</u>	<u>68%*,**</u>	<u>71%*,**</u>	<u>79%</u>
<u>Suggested an improvement in communications:</u>	<u>16%</u>	<u>11%</u>	<u>20%</u>	<u>20%</u>	<u>18%</u>	<u>17%*</u>	<u>21%</u>	<u>17%</u>	<u>11%*</u>	<u>12%</u>	<u>14%*</u>	<u>8%*</u>	<u>14%*</u>	<u>14%</u>	<u>13%*</u>	<u>15%*</u>	<u>15%</u>	<u>16%*</u>	<u>15%</u>	<u>13%</u>
Improve communication to parents from teachers/administration/provide more timely information	9	7	12	10	16*	13*	19*	15	10	10	13	8	12*	13*	11	13	13*	16*	13	9
Need to listen to parents/community/solicit input	8	4	10	12	3*	4	2*	3*	1*	2*	1*	1*	2*	1*	2*	3*	2*	0*,**	3*	4*
<u>Other suggested improvements:</u>																				
Better teachers needed/better teacher-student relations	10	7	11	15	20*	16*	19	27*	7*	6	6*	10	9	5	11	13	10	5	13	18**
Need more AP classes/more challenging coursework/access to Merlin	6	7	7	1	4%	4	5	4	4	5	2	2	5	7	3*	2	5	8	2*	2
Unhappy with program cuts/reinstate music programs	2	2	1	1	1%	2	0	1	4*	5	6*	2	6*	9*	5*	3	5*,**	6*,**	4*	2

* = Significant difference vs. Wave I at 90% confidence level.

** = Significant difference vs. Wave XII at 90% confidence level.

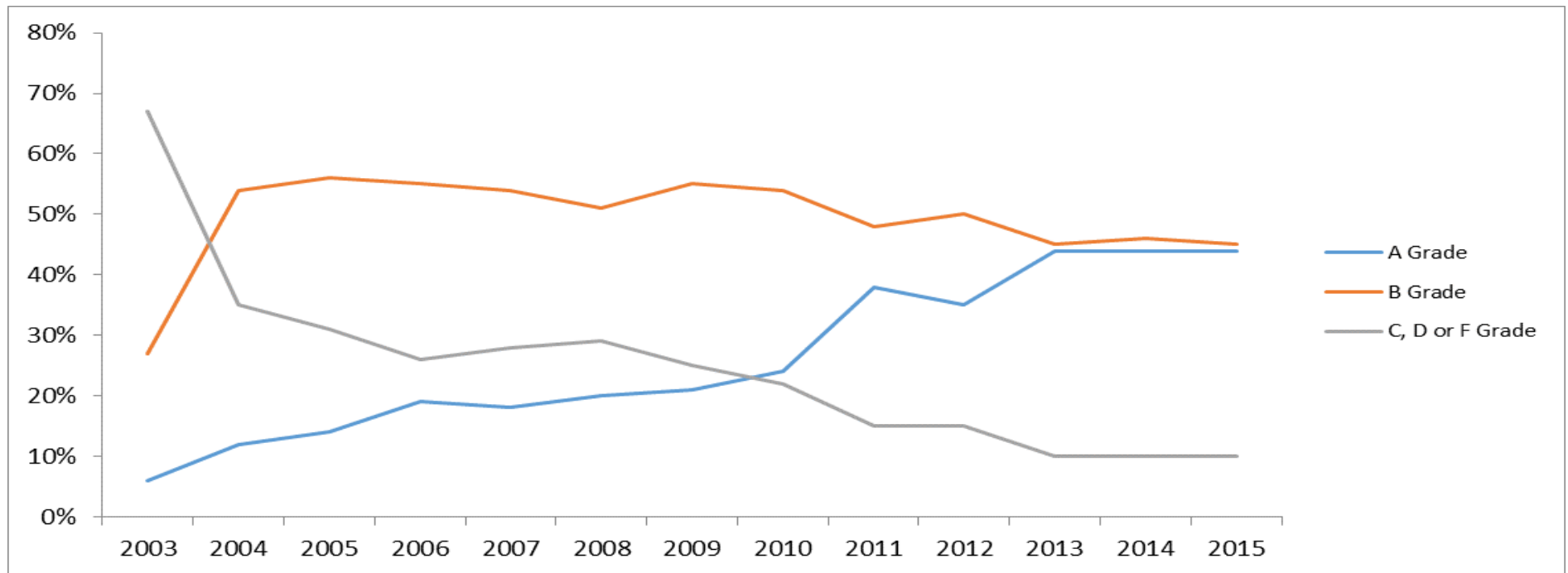
Note: All other changes were mentioned by less than 5% of parents for several measurement periods.

Q. What would you suggest as changes that might cause you to give that school a higher grade for next year?

Grade Given to Issaquah School District

Nine in ten parents (89%) continue to give the District an A or B grade for its performance. Four in ten (44%) gave the District an “A” grade in 2015, 2014 and 2013, which is significantly more than in earlier years.

GRADE GIVEN TO ISSAQUAH SCHOOL DISTRICT (By Parents of Issaquah Elementary, Middle School & High School Students Overall)



Q. What grade would you give the Issaquah School District for 2014- 2015?

Grade Given to Issaquah School District by School Level by Year

When school levels are examined, the level of “A grades being given to Issaquah school district increased significantly since this study began in 2003 and has remained steady since 2013 among parents overall and across school levels.

Grade Given to Issaquah School District by Year

	Wave I (August 2003)				Wave X (August 2012)				Wave XI (August 2013)				Wave XII (August 2014)				Wave XIII (August 2015)							
	<i>Parents of Children in:</i>				<i>Parents of Children in:</i>				<i>Parents of Children in:</i>				<i>Parents of Children in:</i>				<i>Parents of Children in:</i>							
	Elementary		Middle		Elementary		Middle		Elementary		Middle		Elementary		Middle		Elementary		Middle		High			
	<u>All Parents</u>	<u>School</u>	<u>School</u>	<u>School</u>	<u>All Parents</u>	<u>School</u>	<u>School</u>	<u>School</u>	<u>All Parents</u>	<u>School</u>	<u>School</u>	<u>School</u>	<u>All Parents</u>	<u>School</u>	<u>School</u>	<u>School</u>	<u>All Parents</u>	<u>School</u>	<u>School</u>	<u>School</u>	<u>All Parents</u>	<u>School</u>	<u>School</u>	<u>School</u>
Total Respondents	479	234	118	127	1,158	489	376	293	5,739	2,883	1,491	1,365	5,711	2,930	1,459	1,322	7,037	3,617	1,855	1,565				
<i>Grade given:</i>																								
A	6%	7%	4%	4%	35%*	40%*	35%*	27%*	44%*	47%*	45%*	37%*	44%*	48%*	42%*	39%*	44%*	48%*	44%*	36%*				
B	27	26	34	23%	50*	48*	51*	52*	45*	44*	46*	48*	46*	44*	47*	49*	45*	44*	45*	50*				
C	37	40	33	35%	11*	9*	11*	14*	8*	7*	7*	12*	8*	7*	8*	9*	8*	7*	8*	11*				
D	20	19	18	24%	3*	2*	3*	5*	1*	1*	1*	3*	1*	1*	2*	2*	1*	1*	1*	2*				
F	10	8	11	14%	1*	0*	1*	3*	1*	1*	1*	1*	1*	0*	0*	1*	1*	0*	1*	1*				

* = Significant difference from Wave I at the 90% confidence level.

** = Significant difference from Wave XII at the 90% confidence level.

Q. What grade would you give the Issaquah School District for 2014- 2015?

Positive Reasons for Grade Given to Issaquah School District

The number of parents giving a positive reason for the grade they give to the District has overall increased significantly in recent years and vs. 2003, (i.e., from 16% of parents in 2003 to 48% in 2012, 53% in 2013, 52% in 2014 and 51% in 2015).

As the following table details, the most frequently given positive reasons are that the District include...

- *Satisfied/happy with the school experience* (26%), which is significantly more than in 2013 (12%), 2014 (23%) and 2003 (2%)
- *There is good parental involvement/support/communication* (8%)
- *Quality of programs/curriculum* (5%).
- *Doing a good job* (5%).

Positive Reasons for Grade Given to District

	Wave I (August 2003)				Wave X (August 2012)				Wave XI (August 2013)				Wave XII (August 2014)				Wave XII (August 2015)			
	<i>Parents of Children in:</i>				<i>Parents of Children in:</i>				<i>Parents of Children in:</i>				<i>Parents of Children in:</i>				<i>Parents of Children in:</i>			
	Elementary	Middle	High		Elementary	Middle	High		Elementary	Middle	High		Elementary	Middle	High		Elementary	Middle	High	
	All Parents	School	School	School	All Parents	School	School	School	All Parents	School	School	School	All Parents	School	School	School	All Parents	School	School	School
Total Respondents:	479	234	118	127	1,158	489	376	293	5,739	2,883	1,491	1,365	5,711	2,930	1,459	1,322	7,037	3,617	1,855	1,565
<u>Gave a positive reason</u>	<u>16%</u>	<u>18%</u>	<u>14%</u>	<u>15%</u>	<u>48%*</u>	<u>55%*</u>	<u>46%*</u>	<u>41%*</u>	<u>53%*</u>	<u>55%*</u>	<u>52%*</u>	<u>48%*</u>	<u>52%*</u>	<u>55%*</u>	<u>51%*</u>	<u>49%*</u>	<u>51%*</u>	<u>53%*</u>	<u>52%*</u>	<u>46%*</u>
Satisfied/happy with school/ experience	2	3	1	0	11*	11*	13*	7*	12*	14*	11*	11*	23*	26*	21*	18*	26*	28*	27*, **	23*, **
Good parental involvement/support/ communication	0	0	0	0	14*	18*	11*	11*	10*	11*	10*	6*	8*	9*	6*	10*	8*	8*	7*	9*
Doing a good job	6	7	6	9	16*	16*	14*	17*	17*	17*	17*	16*	4	4	5	4	5	4	6	5
Quality of programs/curriculum	5	6	4	2	4	6	3	3	7	8	5	5	5	5	6	4	5	6	4	3

* = Significant difference vs. Wave I at 90% confidence level.

** = Significant difference vs. Wave XII at 90% confidence level.

Q. Why did you give this grade?

Negative Reasons for Grades

Fewer parents are giving a negative reason for the grade they give the District—which may be a reflection of the high levels of A/B grades being given.

In 2015, the number of parents (30%) giving a negative reason for the grade they give to the District declined significantly vs. 2014 (33%), 2013 (38%) and 2003 (85%).

- Dissatisfactions are at extremely low levels. There were no specific dissatisfactions mentioned by 5% or more parents.
- The number of parents mentioning dissatisfaction with communications from the District has significantly declined--from 16% of parents overall in 2003 to 4% in 2015 as well as in 2014 and 2013.

Negative Reasons for Grade Given District

	Wave I (August 2003)				Wave X (August 2012)				Wave XI (August 2013)				Wave XII (August 2014)				Wave XIII (August 2015)			
	<i>Parents of Children in:</i>				<i>Parents of Children in:</i>				<i>Parents of Children in:</i>				<i>Parents of Children in:</i>				<i>Parents of Children in:</i>			
	Elementary		Middle	High	Elementary		Middle	High	Elementary		Middle	High	Elementary		Middle	High	Elementary		Middle	High
	All Parents	School	School	School	All Parents	School	School	School	All Parents	School	School	School	All Parents	School	School	School	All Parents	School	School	School
Total Respondents:	479	234	118	127	1,158	489	376	293	5,739	2,883	1,491	1,365	5,711	2,930	1,459	1,322	7,037	3,617	1,855	1,565
<u>Mentioned something negative/ improvement needed</u>	85%	85%	85%	87%	43%*	39%*	42%*	50%*	38%*	36%*	37%*	42%*	33%*	31%*	34%*	36%*	30%*, **	30%*	28%*, **	33%*
<u>Mentioned Communication</u>	16	12	19	21	4*	3*	4*	6*	4*	4*	3*	3*	4*	4*	3*	5*	4*	4*	3*	4*
<u>Need to listen to parents/ community/solicit input</u>	11	6	15	16	1*	0*	1*	1*	1*	1*	0*	1*	1*	0*	0*	2*	1*	1*	0*	1*
<u>Improve communication to parents from teacher/administration/provide more timely information</u>	6	6	5	6	3*	3*	3*	4	3*	3*	3*	2**	3*	4	3*	3	3*	3*	3*	3
<u>Other Reasons Mentioned</u>																				
<u>Increase funding/school support/work with State for funding</u>	5	6	4	5	2*	2*	1*	2	1*	1*	1*	1*	0*	0*	1*	0*	1*	1*	1*	1*

* = Significant difference vs. Wave I at 90% confidence level.

** = Significant difference vs. Wave XII at 90% confidence level.

Q. Why did you give this grade?

Suggested Changes for District

In recent years the number of parents suggesting ways that the District could improve has declined. In 2015 over half of parents (55%) suggest at least one way that the District can change or improve--which is directionally fewer than in 2014 (59%) and significantly fewer than in 2013 (64%), 2012 (70%) or 2003 (92%). The lower level of parents making a suggestion may be due to the higher grades being given to the District now.

A significant minority (28%) state that they have no suggestions for improvements by the District, which is significantly more than in the past—25% in 2014, 24% in 2013 and 1% in 2003.

As the table that follows details, the requests for changes continue to be diverse and no request is being made by more than a small minority of parents.

One of the most frequently requested change historically has been to improve communication. However, the number of parents requesting improved communication overall from the District has declined significantly in recent years (from 24% in 2003 to 9% in 2015.).

While only mentioned by small minorities, the most frequently requested changes include...

- *Improve communications to parents from teachers/administration/provide more timely information (8%)*
- *Unhappy with program cuts/reinstate music programs (5%)*

All other suggestions were made by less than 5% of parents.

Suggested Changes for District

	Wave I (August 2003)				Wave X (August 2012)				Wave XI (August 2013)				Wave XII (August 2014)				Wave XIII (August 2015)									
	<i>Parents of Children in:</i>				<i>Parents of Children in:</i>				<i>Parents of Children in:</i>				<i>Parents of Children in:</i>				<i>Parents of Children in:</i>									
	Elementary		Middle		Elementary		Middle		Elementary		Middle		Elementary		Middle		Elementary		Middle		Elementary		Middle		High	
	All Parents	School	School	School	All Parents	School	School	School	All Parents	School	School	School	All Parents	School	School	School	All Parents	School	School	School	All Parents	School	School	School		
Total Respondents:	479	234	118	127	1,158	489	376	293	5,739	2,883	1,491	1,365	5,711	2,930	1,459	1,322	7,037	3,617	1,855	1,565						
<u>SUGGESTED A CHANGE</u>	<u>92%</u>	<u>93%</u>	<u>94%</u>	<u>91%</u>	<u>70%*</u>	<u>69%*</u>	<u>68%*</u>	<u>73%*</u>	<u>64%*</u>	<u>64%*</u>	<u>65%*</u>	<u>66%*</u>	<u>59%*</u>	<u>60%*</u>	<u>61%*</u>	<u>54%*</u>	<u>55%*</u>	<u>58%*</u>	<u>54%*. **</u>	<u>52%*</u>						
<u>Suggested an improvement in communications</u>	<u>24%</u>	<u>23%</u>	<u>23%</u>	<u>25%</u>	<u>12%*</u>	<u>10%*</u>	<u>13%*</u>	<u>13%</u>	<u>8%*</u>	<u>9%*</u>	<u>8%*</u>	<u>8%*</u>	<u>10%*</u>	<u>13%*</u>	<u>8%*</u>	<u>7%*</u>	<u>9%*</u>	<u>9%*</u>	<u>9%*</u>	<u>10%*</u>						
Improve communication to parents from teachers/administration/provide more timely information	12	13	12	9	9	7*	11	9	7*	7*	7*	6	8*	12*	7*	4	8*	8*, **	8*	6						
Need to listen to parents/community/solicit input	15	12	16	18	3*	3*	3*	4*	2*	2*	1*	3*	2*	0*	2*	4*	2*	1*	1*	3*						
<u>Suggested other improvements</u>																										
Unhappy with program cuts/reinstate music program	2	2	1	1	1	2	1	0	5*	6*	6*	4	3	4	3	2	5*, **	8*, **	4	2						

* = Significant difference vs. Wave I at 90% confidence level.

** = Significant difference vs. Wave XII at 90% confidence level.

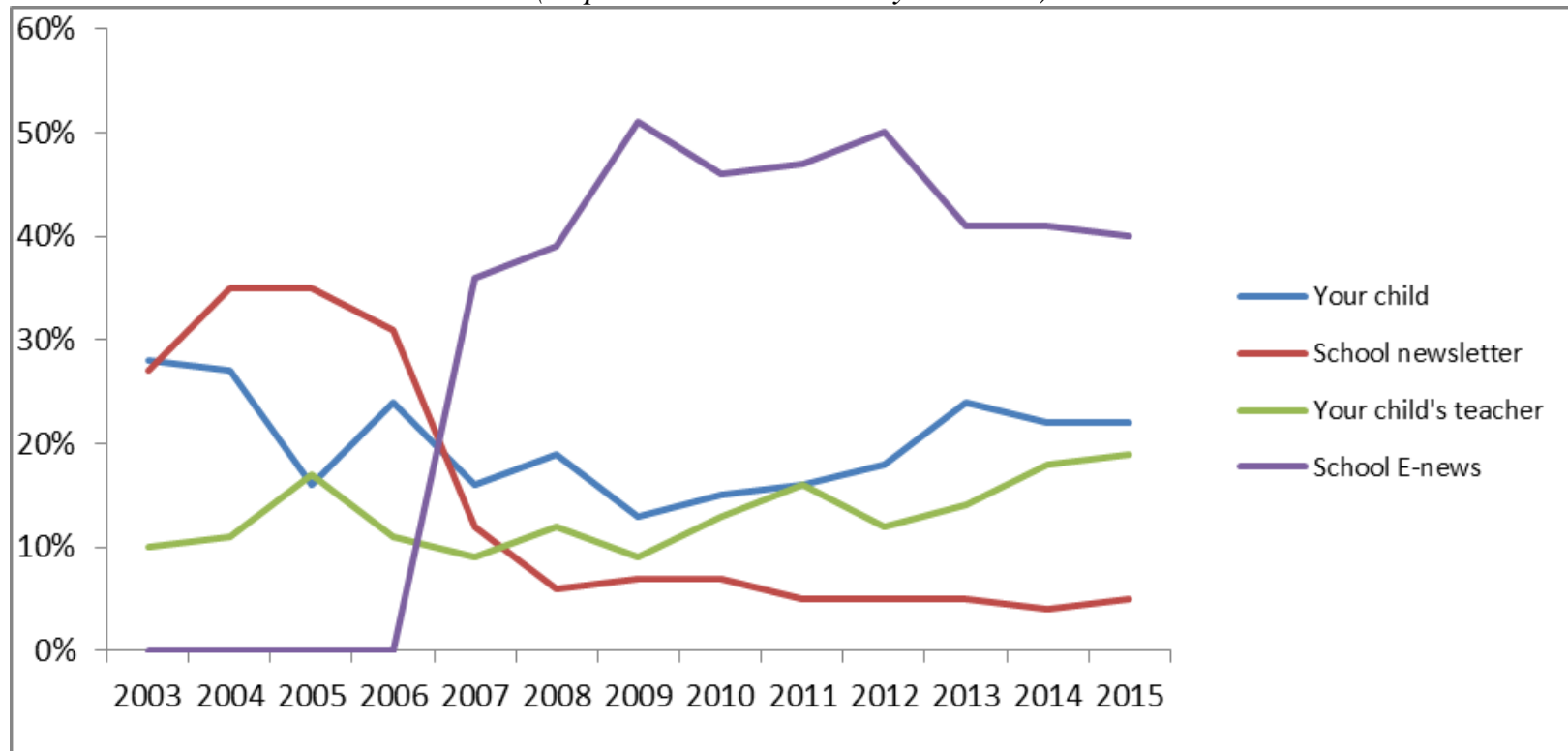
Q. What would you suggest as changes that might cause you to give the Issaquah School District a higher grade for next year?

Best Source of Information about Child's School

The School E-News continues to have a strong presence. In 2015 the School E-News is most frequently mentioned as the best source of information about the child's school—by four in ten parents (40%) overall. This was also the situation in 2014 (41%) and 2013 (41%).

Best Source of Information about Child's School

(Top Sources Historically Vs. Now)



Q. What is your best source of information about your child's school?

Across school levels the School E-News continues to now be the most frequently mentioned best source of information, followed by the child and the child's teacher. Since its introduction virtually all other sources have declined as best sources.

Best Source of Information About Your Child's School

	Wave I (August 2003)				Wave X (August 2012)				Wave XI (August 2013)				Wave XII (August 2014)				Wave XIII (August 2015)			
	<i>Parents of Children in:</i>				<i>Parents of Children in:</i>				<i>Parents of Children in:</i>				<i>Parents of Children in:</i>				<i>Parents of Children in:</i>			
	<u>All Parents</u>	<u>School</u>	<u>School</u>	<u>School</u>	<u>All Parents</u>	<u>School</u>	<u>School</u>	<u>School</u>	<u>All Parents</u>	<u>School</u>	<u>School</u>	<u>School</u>	<u>All Parents</u>	<u>School</u>	<u>School</u>	<u>School</u>	<u>All Parents</u>	<u>School</u>	<u>School</u>	<u>School</u>
Total Respondents:	479	234	118	127	1,158	489	376	293	5,739	2,883	1,491	1,365	5,711	2,930	1,459	1,322	7,037	3,617	1,855	1,565
School E-News	0%	0%	0%	0%	50%*	46%*	53%*	54%*	41%*	38%*	45%*	42%*	41%*	35%*	47%*	48%*	40%*	34%*	45%*	48%*
Your Child	28	19	32	40	18*	12*	21*	24*	24	17*	28	33	22*	15	28	31*	22*	15*	29	30*
School Newsletter	27	27	31	24	5*	7*	4*	2*	5*	6*	5*	4*	4*	5*	5*	3*	5*	5*	4*	4*
Your Child's Teacher	10	15	6	3	12	23*	5	3	14*	23*	6	4	18*	30*	6	3	19*	31*	7	3
Other Parents	13	16	8	13	4*	5*	5	3*	7*	8*	5	5*	6*	8*	4*	4*	6*	8*	5*	4*
Internet	3	3	4	2	5	3	7	5	4	3	5	7	4	3	6	5	4	3	5	6
Work/volunteer at school	8	10	8	4	1*	1*	1*	1	1*	1*	0*	0*	1*	1*	0*	1*	0*	0*	0*	0*
PTA	1	3	0	0	1	2	1	1	1	1*	0	0	1	1*	0	0	1	1*	0	0
Media (Radio, Newspaper, TV)	#	0	0	1	0	0	0	0	0	0	0	0	0	0	0	0	0	0	0	0
District Newsletter	#	0	1	1	0	0	0	0	#	#	1	1	0	0	0	0	0	0	1**	0
District E-News	0	0	0	0	2*	2*	2	3	2*	2*	3*	3	2*	1*	2*	3*	2*	1	3*	3
Other Sources	4	3	6	5	1*	1*	2*	2	1*	1*	2*	1*	1*	1*	1*	1*	1*	1*	1*	1*

* = Significant difference at 90% confidence level vs. Wave I.

** = Significant difference at 90% confidence level vs. Wave XII.

= Less than 1%

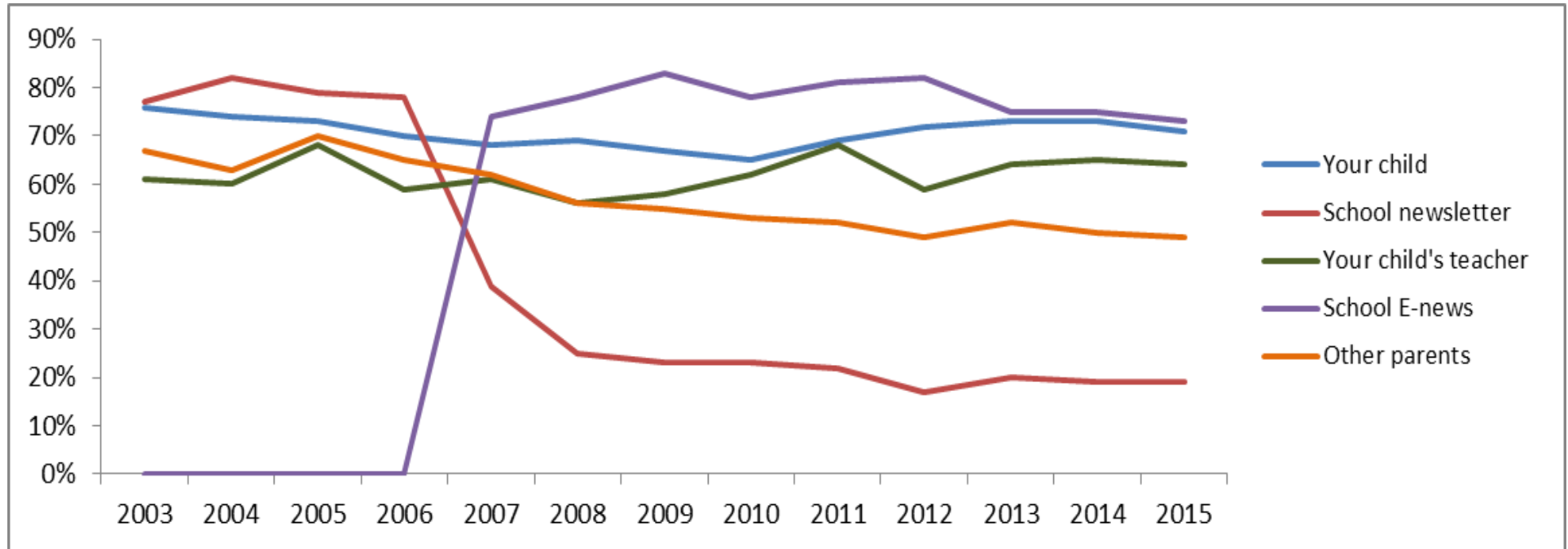
Q.What is your best source of information about your child's school?

All Sources of Information about Child's School

The vast majority of parents (73%) now use the School E-News as one of their sources of information about their child's school. Other frequently used sources of information about the child's school are the child (71%), the child's teacher (64%) and other parents (49%). Usage of the School Newsletter has declined over the past ten years, from 77% in 2003 to 19% in 2015.

All Sources of Information About Your Child's School

(Top 5 Sources Historically Vs. Now)



Q. What is your best source of information about your child's school? What are other important sources of information about your child's school?

Across school levels, the School E-News is now one of the most frequent sources of information about the child's school with approximately three out of four (73%) of parents using it. At the same time usage of a number of other sources of information has declined since 2003 overall.

Among Parents of Elementary School students, the child's teacher continues to be one of their most frequent sources of information, with four out of five (83%) mentioning the teacher.

All Sources of Information About Child's School

	Wave I (August 2003)				Wave X (August 2012)				Wave XI (August 2013)				Wave XII (August 2014)				Wave XIII (August 2015)			
	<i>Parents of Children in:</i>				<i>Parents of Children in:</i>				<i>Parents of Children in:</i>				<i>Parents of Children in:</i>				<i>Parents of Children in:</i>			
	Elementary	Middle	High		Elementary	Middle	High		Elementary	Middle	High		Elementary	Middle	High		Elementary	Middle	High	
	All Parents	School	School	School	All Parents	School	School	School	All Parents	School	School	School	All Parents	School	School	School	All Parents	School	School	School
Total Respondents:	479	234	118	127	1,158	489	376	293	5,739	2,883	1,491	1,365	5,711	2,930	1,459	1,322	7,037	3,617	1,855	1,565
School E-News	0%	0%	0%	0%	82%*	81%*	83%*	83%*	75%*	73%*	77%*	77%*	75%*	72%*	78%*	80%*	73%*, **	70%*	76%*	77%*, **
School Newsletter	77	78	81	71	17*	25*	15*	8*, **	20*	27*	15*	13*	19*	24*	15*	11*	19*	24*	16*	12*
Your Child	76	74	75	81	72*	64*	78	78	73*	68*	79	79	73	67*	79	80	71*, **	65*, **	78	77**
Your Child's Teacher	61	82	43	39	59	81	48	38	64	82	50	40	65*	84	52*	39	64	83	52*	36**
Other Parents	67	75	54	65	49*	52*	48*	48*	52*	57*	49*	45*	50*	55*	45*	44*	49*	54*	44*	44*
District E-News	0	0	0	0	43*	41*	44*	45*	36*	33*	39*	39*	34*	30*	39*	36*	31*	27*, **	37*	35*
Internet	34	36	37	26	45*	38	50*	53*	36	31*	38	44	33	27*	40	39*	33	27*	36**	40*
District Newsletter	24	22	25	25	5*	4*	8*	5*	6*	4*	8*	8*	5*	3*	7*	6*	6*, **	3*	9*, **	7*
Media (Radio, Newspaper, TV)	18	14	21	23	6*	3*	6*	10*	5*	3*	5*	9*	3*	2*	4*	6*	4*	2*	5*	6*
Work/volunteer at school	10	12	10	5	2*	2*	2*	1	1*	2*	1*	1*	1*	1*	1*	1*	0*, **	1*	0*	0*, **
PTA	4	5	4	2	4**	6	2	5	2*	3*	1*	1	2*	3	1*	1	2*	3	1*	1
Other Sources	7	6	8	8	3*	2*	3*	4	3*	3*	3*	4	2*	2*	2*	2*	2*	1*	2*	2

* = Significant difference vs. Wave I at 90% confidence level.

** = Significant difference vs. Wave XII at 90% confidence level.

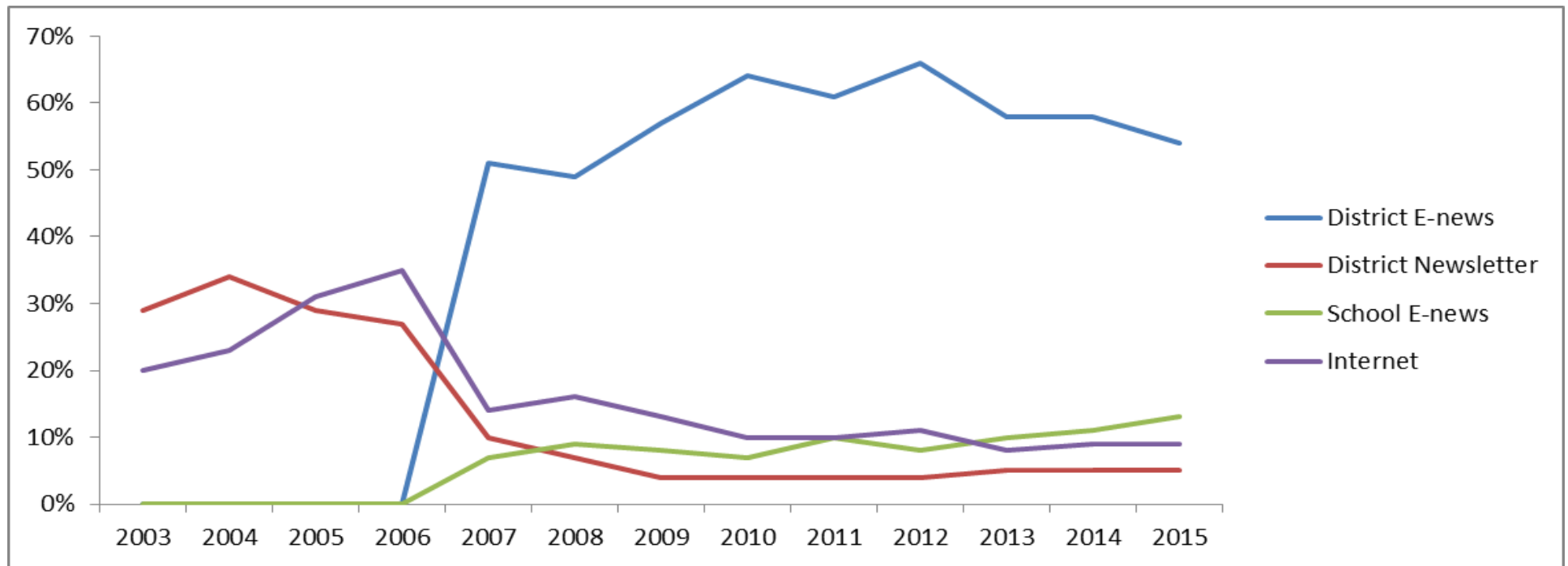
Q.What is your best source of information about your child's school? What are other important sources of information about your child's school?

Best Source of Information about Issaquah School District

The District E-News is now the most popular source of information about the District. Currently more than half of parents (54%) consider it to be their best source of information about the District. At the same time other previously popular sources of information declined in popularity during recent years.

Best Source of Information About School District

(Top 4 Sources Historically Vs. Now)



Q. What is your best source of information about the Issaquah School District?

Across school levels, the District E-News has grown to be considered the best source of information about the District by over half of parents overall (54%). In recent years most other sources have declined in being considered the best source of information about the District.

Best Source of Information About the Issaquah School District

	Wave I (August 2003)				Wave X (August 2012)				Wave XI (August 2013)				Wave XII (August 2014)				Wave XIII (August 2015)			
	<i>Parents of Children in:</i>				<i>Parents of Children in:</i>				<i>Parents of Children in:</i>				<i>Parents of Children in:</i>				<i>Parents of Children in:</i>			
	Elementary		Middle	High	Elementary		Middle	High	Elementary		Middle	High	Elementary		Middle	High	Elementary		Middle	High
	All Parents	School	School	School	All Parents	School	School	School	All Parents	School	School	School	All Parents	School	School	School	All Parents	School	School	School
	479	234	118	127	1,158	489	376	293	5,740	2,883	1,491	1,365	5,711	2,930	1,459	1,322	7,037	3,617	1,855	1,565
District E-News	0%	0%	0%	0%	66%*	68%*	64%*	65%*	58%*	60%*	57%*	55%*	58%*	59%*	57%*	55%*	54%*,**	56%*,**	53%*,**	54%*
District Newsletter	29	25	33	33	4*	3*	5*	3*	5*	3*	7*	8*	5*	3*	8*	7*	5*	3*	7*	7*
Internet	20	23	25	10	11*	11*	12*	9	8*	7*	8*	10	9*	8*	10*	9	9*	8*	9*	11
Media (radio, newspaper, tv)	16	16	14	17	1*	0*	0*	2*	1*	1*	1*	1*	1*	0*	1*	2*	1*	0*	1*	1*,**
Other parents	13	17	9	12	3*	1*	3*	3*	6*	6*	5*	5*	5*	6*	4*	5*	5*	6*	4*	5*
School Newsletter	6	7	4	7	1*	2*	1*	0*	3*	4*	2*	1	3*	4*	2*	1*	3*	4*	2*	2
School E-News	0	0	0	0	8*	6*	8*	9*	10*	11*	10*	10*	11*	11*	10*	11*	13*,**	14*,**	13*,**	11*
Your child	2	0	4	5	2	2	2	3	5*	3*	6	7	4*	2*	6	7	5*,**	3*	8*,**	9
PTA	2	3	0	2	1*	1*	1	1	0*	0*	0	0*	0*	0*	0	0	0*	0*	0	0
Work/volunteer at school	4	3	4	5	1*	0*	1*	1*	0*	0*	0*	0*	0*	0*	0*	0*	0*	0*	0*	0*
Your child's teacher	1	1	2	1	2	4*	1	1	3*	4*	2	1	3*	4*	2	1	4*,**	5*,**	2	1
Other Sources	4	3	4	5	1*	0*	2	2	1*	1*	1*	1*	1*	0*	1*	1*	1*	0*	1*	0*,**

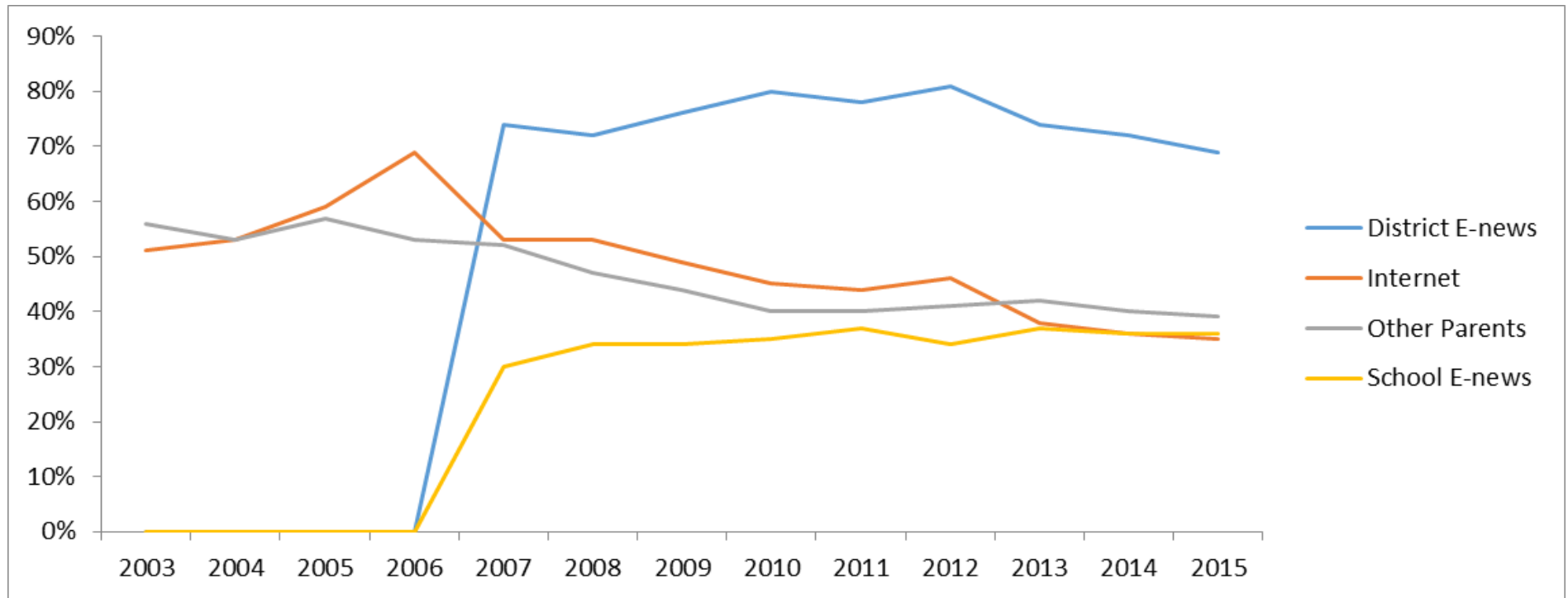
* = Significant difference vs. Wave I at 90% confidence level.

** = Significant difference vs. Wave XII at 90% confidence level.

Q. What is your best source of information about the Issaquah School District?

All Sources of Information about Issaquah School District

With regard to all sources of information about the District, the District E-News is now the most popular and is used by approximately seven in ten (69%) parents. The next most frequently used sources are other parents (39%), the School E-News (36%) and the Internet (35%).



Q. What is your best source of information about the Issaquah School District? What are other sources of information about the Issaquah School District?

Across all school levels, the District E-News is now the major source of information about the District for parents—with approximately seven in ten (69%) using it. Other popular sources include other parents (39%), the School E-News (36%) and the Internet (35%). The teacher has been a constant source of information about the District since this study began and continues to be mentioned by one in four parents (27%).

All Sources of Information About the Issaquah School District

	Wave I (August 2003)				Wave X (August 2012)				Wave XI (August 2013)				Wave XII (August 2014)				Wave XIII (August 2015)			
	Parents of Children in:				Parents of Children in:				Parents of Children in:				Parents of Children in:				Parents of Children in:			
	Elementary	Middle	High	School	Elementary	Middle	High	School	Elementary	Middle	High	School	Elementary	Middle	High	School	Elementary	Middle	High	School
	All Parents	School	School	School	All Parents	School	School	School	All Parents	School	School	School	All Parents	School	School	School	All Parents	School	School	School
Total Respondents:	479	234	118	127	1,158	489	376	293	5,740	2,883	1,491	1,365	5,711	2,930	1,459	1,322	7,037	3,617	1,855	1,565
District E-News	0%	0%	0%	0%	81%*	80%*	80%*	82%*	74%*	74%*	74%*	72%*	72%*	74%*	70%*	70%*	69%*,**	70%*,**	68%*	68%*
School E-News	0	0	0	0	34*	33*	33*	37*	37*	37*	38*	35*	36*	37*	36*	34*	36*	36*	38*	32*
Other parents	56	55	60	54	41*	42*	39*	42*	42*	44*	42*	37*	40*	41*	39*	39*	39*	39*	39*	37*
Internet	51	55	60	39	46*	43*	51	45*	38*	35*	40*	41	36*	33*	41*	38*	35%**,**	32*	38%**,**	38
District Newsletter	63	64	66	59	13*	12*	16*	9*	14*	13*	15*	15*	13*	11,*	16*	13*	12*	10*	16*	14*
Media (radio, newspaper, TV)	47	46	51	47	15*	12*	15*	21*	13*	11*	12*	18*	11*	8*	12*	15*	9%**,**	7%**,**	10%**,**	13*
School Newsletter	32	32	33	30	7*	8*	6*	6*	11*	15*	8*	7*	11*	14*	8*	6*	12*	15*	10*	7*
Your child's teacher	28	32	25	26	22*	27	22	13*	27	32	26	19	28	33	26	19*	27	33	26	17*
Your child	18	13	18	28	22	27	22	13*	26*	19*	34*	33*	25*	17	33*	31	27%**,**	19%**,**	35*	34
Work/Volunteer at School	4	4	4	6	1*	0*	2	1*	0*	0*	0*	1*	1*	0*	1*	1*	0*	0*	0%**,**	1*
PTA	3	4	3	2	2	2*	2	3	1*	1*	1*	1	1*	1*	1*	1	1*	1*	1*	1
Other	5	5	4	6	3*	2*	4	3	2*	2*	2*	2	2*	1*	2*	2*	1%**,**	1*	2*	1*

* = Significant difference vs. Wave I at 90% confidence level.

** = Significant difference vs. Wave XII at 90% confidence level.

Q. What is your best source of information about the Issaquah School District? What are other sources of information about the Issaquah School District?

Whether Currently Donate to ISF

Across school levels, approximately six in ten (63%) of these parents who chose to participate in this study say that they currently donate to the ISF.

	<i>Parents of Children in:</i>		
	<u>All Parents</u>	<u>Elementary School</u>	<u>Middle/High School</u>
	(7,037)	(3,617)	(3,420)
Yes, donate	63%	63%	63%
No, don't donate	37	37	37%

Q. Do you currently donate to the ISF?

Reasons for Not Donating

The most frequent reason given for not donating to the ISF is that the parent is already donating to the PTSA. Parents of Elementary School students are especially likely to say this.

	<i>Parents of Children in:</i>		
	<u>All Parents</u>	<u>Elementary School</u>	<u>Middle/High School</u>
	(7,037)	(3,617)	(3,420)
I give to my PTSA	50%	55%*	44%
I don't understand how it benefits my child	12	14	11
I don't see the need for additional funding	9	7*	13
I didn't know about the Foundation	9	10	8
Other	28	24*	32

*Significant difference vs. parents of Middle/High School students at the 90% confidence level.

Q. If not, why?

Whether Annual December Parent-Teacher Conference Was Productive and of Value to You

Four out of five (81%) of parents of Elementary School student find the annual December Parent-Teacher Conference was productive and of value to them.

	Parents of Elementary <u>School Students</u> (3,617)
Strongly Agree	40%
Agree	41
Neutral	16
Disagree	3
Strongly Disagree	1

Was the annual December Parent-Teacher Conference productive and of value to you?