

Parent Study Results

August 2003 - August 2014

**Prepared by: Dorothy Geraghty
Sammamish, WA**

September 2014

Table of Contents

	<u>Page</u>
Background/Research Design	3
Scope of Report	5
Summary of Findings	6
Detailed Findings	
Grade given to neighborhood school	8
Reasons for grades	10
Suggested changes for school	14
Grades given to Issaquah School District	16
Reasons for grades	18
Suggested changes for Issaquah School District	22
Best source of information about child's school	24
All sources of information about child's school	26
Best source of information about the Issaquah School District	28
All sources of information about the Issaquah School District	30

Background/Research Design

The Issaquah School District has conducted a Parent web survey among parents of its Elementary, Middle School and High School students each summer for twelve years—from August 2003 through August 2014. The primary purpose of this study is to give all parents an opportunity to tell the District about:

- Their current satisfaction levels with the performance of the school that their oldest child attends and with the Issaquah District
- Reasons for current satisfaction levels
- Changes that parents desire at the school and district level

Additionally, learning is obtained regarding how parents are now receiving information about their child's school and the District. When the District adds a new source, such as District E-News, its impact is tracked.

The results of these studies are used as input for:

- assessing school and District performance
- planning improvements in Issaquah's schools and the Issaquah District overall.

Please note that the sample is self selected and does not necessarily represent all parents in the District. All parents in the District are invited to participate in this study and the respondents are the ones who choose to participate. Importantly, all parents in the District are provided with the opportunity to give the District their input in this annual study.

The District also conducts a Community Polling study by telephone where respondents are selected randomly with age and sex quota groups so that the sample is representative of parents in the District. In this study the District obtains learning from residents of the community without children attending District schools as well as parents of students. The results of this study are covered in a separate report.

Significantly more parents participated in this study during the past two years than in the past. The breakdown of the sample by grade level of the oldest child attending school is:

Number of Parents Participating

	<u>2003</u>	<u>2004</u>	<u>2005</u>	<u>2006</u>	<u>2007</u>	<u>2008</u>	<u>2009</u>	<u>2010</u>	<u>2011</u>	<u>2012</u>	<u>2013</u>	<u>2014</u>
Elementary School	234	175	217	230	435	352	320	466	1,134	489	2,883	2,930
Middle School	118	68	75	108	181	268	177	214	421	376	1,491	1,459
High School	127	76	84	148	117	240	139	189	332	293	1,365	1,322
Total	479	319	376	486	733	860	636	869	1,887	1,158	5,739	5,711

The subtotals do not always add up to the totals in the survey results because a few parents chose not to respond to all the questions. This is typical in surveys and happened infrequently in this study. Also responses do not always add up to 100% due to rounding. Instead at times they add up to 99% or 101%.

Statistically significant differences in responses at the 90% confidence level are noted.

Scope of Report

This study includes questions on:

- Grade oldest child attends
- Attendance area for oldest child
- Letter grade given to oldest child's school
- Why grade was given
- Changes suggested for school
- Letter grade given to Issaquah school district
- Why grade was given
- Changes suggested for district
- Best source of information about child's school
- All sources of information about child's school
- Best source of information about Issaquah School District
- All sources of information about Issaquah School District

Please note that with regard to the open-end responses (e. g., reasons for grades given) this report covers the responses given by 5% or more of the parents overall during the recent past.

Summary of Findings

- Issaquah District has held on to the higher grades that it achieved vs. 2012 or 2003 (the baseline year).
 - Almost nine in ten parents (88%) now give their oldest child’s neighborhood school an A or B grade, which is significantly more than in 2012 (83%) or in 2003 (71%).
 - The high number of parents giving their child’s school an “A” (46%) has also continued to be significantly higher than in 2012 (37%) or 2003 (23%).
 - Nine in ten parents (90%) give the Issaquah District’s performance an A or B grade, which is significantly more than in 2012 (85%) or 2003 (33%). The increased level of “A” grades given to the District has also continued, growing from 35% in 2012 to 44% in both 2013 and 2014.
- The majority of parents (77%) continue to suggest at least one change or improvement at **their child’s school**.
- The requested improvements continue to be diverse and made by a small minority. The most frequent requests continue to be...
 - *Improve communication to parents from teacher/school administration/provide more timely information* (12%), which is significantly fewer than in 2012 (16%) but comparable to 2013 (10%).
 - *Better teachers needed/better teacher-student relations*, with 9% of parents overall requesting this—which is also significantly fewer than in 2012 (20%).
 - Unhappy with program cuts/reinstate music programs (6%).
 - Need more AP classes/more challenging coursework/access to Merlin (5%).

- Approximately six in ten parents (59%) suggest some change or improvement **in the District**, which is significantly fewer than in recent years; i.e., 2013 (64%), 2012 (70%), 2011 (75%) or 2010 (86%).

- The requests for change or improvements at the District level continue to be diverse with none suggested by more than a small minority of parents. The most frequently made requests are...
 - *Improve communications to parents from teachers/administrators/provide more timely information* (8%)
 - *Better teachers needed/better student-teacher relations* (5%)
 - *Dislike Wednesday schedule* (5%)

- The School E-News has become a primary source of information for parents. It is now considered the *best* source of information about their child's school by four in ten parents overall (41%), which was also the level of parents (41%) feeling this way in 2013. Other primary sources that are most frequently mentioned are their child (22%) and their child's teacher (18%). Three out of four parents (75%) now consider the School E-News to be one of their sources of information about their child's school.

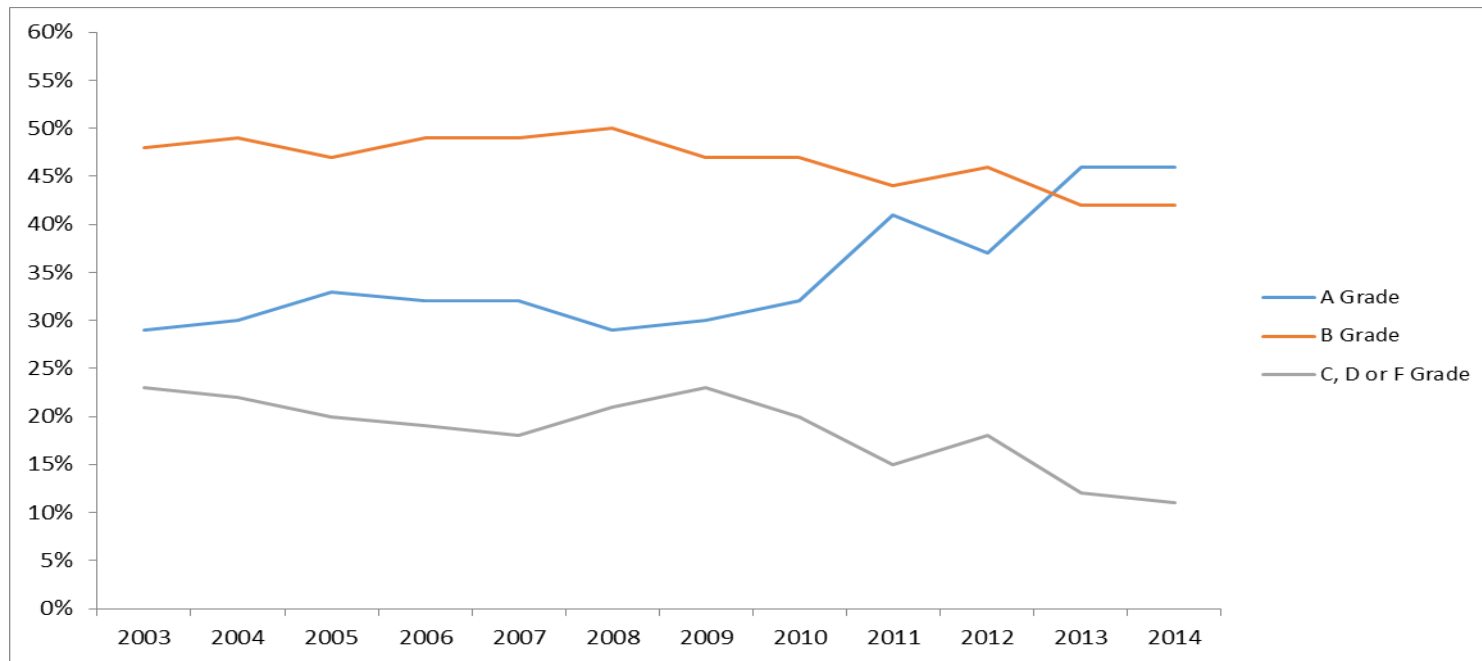
- During the past year, the District E-News has also had a strong presence. It is now considered the *best* source of information about the District by approximately six in ten parents (58%), which was also the number of parents (58%) who felt this way in 2013. In the distance, the next most frequently considered best sources of information about the District are the School E-News (11%) and the Internet (9%). The District E-News is now used by approximately seven in ten (72%) parents as one of their sources of information about the District.

Detailed Findings

Grade Given to Neighborhood School

As the chart below illustrates, almost all parents give their child's school an A or B grade. The gains achieved in 2013 in "A" grades have been maintained. Nine in ten parents (88%) now give their child's school an "A" or "B" grade--46% give their child's school an "A" grade, and 42% give a "B" grade. Only 11% give a "C" or lower grade.

GRADE GIVEN TO NEIGHBORHOOD SCHOOL OF OLDEST CHILD



Q. What grade would you give the school your oldest child attended in 2013-2014?

Parents of Elementary school students continue to be more likely to give their child’s school an “A” grade than parents of older students. Parents of High School students are the least likely to give an A grade.

Grade Given to School by Year

	Wave I (August 2003)				Wave IX (August 2011)				Wave X (August 2012)				Wave XI (August 2013)				Wave XII (August 2014)							
	<i>Parents of Children in:</i>				<i>Parents of Children in:</i>				<i>Parents of Children in:</i>				<i>Parents of Children in:</i>				<i>Parents of Children in:</i>							
	Elementary	Middle	High		Elementary	Middle	High		Elementary	Middle	High		Elementary	Middle	High		Elementary	Middle	High					
	<u>All Parents</u>	<u>School</u>	<u>School</u>	<u>School</u>	<u>All Parents</u>	<u>School</u>	<u>School</u>	<u>School</u>	<u>All Parents</u>	<u>School</u>	<u>School</u>	<u>School</u>	<u>All Parents</u>	<u>School</u>	<u>School</u>	<u>School</u>	<u>All Parents</u>	<u>School</u>	<u>School</u>	<u>School</u>	<u>All Parents</u>	<u>School</u>	<u>School</u>	<u>School</u>
Total Respondents:	479	234	118	127	1,887	1,134	421	332	1,158	489	376	293	5,739	2,883	1,491	1,365	5,711	2,930	1,459	1,322				
Grade given:																								
A	23%	31%	22%	10	41%*	45%*	39%*	30%*	37%*	45%*	35%*	25%*	46%*	53%*	44%*	34%*	46%*	53%*	42%*	36%*				
B	48	47	57	43	44	43	45*	47	46	41	47	52	42*	39*	46*	47	42*	38*	46*	48*				
C	21	19	14	31	11*	9*	12*	18*	14	11*	15	17*	9*	7*	8*	14*	9*	7*	10*	13*				
D	6	3	6	13	3*	2	3*	5*	3*	2	2*	4*	2*	1*	2*	4*	2*	1	2*	2*				
F	2	0	2	4	1	1	1	1	1	1	1*	1	1*	1	1*	1*	0	1	0*	1*				

* = Significant difference from Wave I at the 90% confidence level.

** = Significant difference from Wave XI at the 90% confidence level.

Q. What grade would you give the school your oldest child attended in 2013-2014?

Positive Reasons Given for Grade

As the following tables detail, when parents give their reasons for the grade they gave their child's school, six in ten (61%) mention something positive—which is comparable to 2013 (61%) and significantly more than when this study began in 2003 (51%). Parents of Elementary school students continue to be especially likely to mention something positive.

Across school levels, the most frequently given positive reasons still concern...

- the school experience (26%)
- the teacher (25%)
- the Administration/staff (9%)
- the quality of programs/curriculum (8%)
- good parental involvement/support (5%)

Positive Reasons for Grade Given School

	Wave I (August 2003)				Wave IX (August 2011)				Wave X (August 2012)				Wave XI (August 2013)				Wave XII (August 2014)			
	<i>Parents of Children in:</i>				<i>Parents of Children in:</i>				<i>Parents of Children in:</i>				<i>Parents of Children in:</i>				<i>Parents of Children in:</i>			
	Elementary	Middle	High		Elementary	Middle	High		Elementary	Middle	High		Elementary	Middle	High		Elementary	Middle	High	
	All Parents	School	School	School	All Parents	School	School	School	All Parents	School	School	School	All Parents	School	School	School	All Parents	School	School	School
Total Respondents:	479	234	118	127	1,887	1,134	421	332	1,158	489	376	293	5,739	2,883	1,491	1,365				
<u>Mentioned something positive</u>	<u>51%</u>	<u>63%</u>	<u>47%</u>	<u>27%</u>	<u>58%*</u>	<u>63%</u>	<u>53%</u>	<u>45%*</u>	<u>56%*</u>	<u>66%</u>	<u>52%</u>	<u>47%*</u>	<u>61%*,**</u>	<u>68%</u>	<u>57%*</u>	<u>53%*</u>	<u>61%*</u>	<u>68%</u>	<u>55%*</u>	<u>52%*</u>
Like teacher/quality of teacher	25	36	19	9	28	32	24*	20*	26	34	23	19*	25	30*	23	15*	25	31*	20	19*
Satisfied with the school/experience	18	22	17	10	30*	33*	28*	20*	17	18	17	15	21**,**	27**,**	17	13	26**,**	30*	23**,**	20**,**
Positive about administration/good staff	10	13	8	5	12	13	12	7	10	12	9	9	9	11	8	4**	9	12	7	6
Quality of programs/curriculum	15	21	13	8	14	14*	12	13*	6*	7*	4*	5	9**,**	9*	10**	9**	8*	5**,**	10	12
Doing a good job	2	0	5	1	2	1	3	4	10*	10*	11	9*	9*	5**,**	10*	15**,**	3**	3**,**	2**,**	2**
Good parental involvement/support/communication	7	12	5	2	6	6*	7	5	5*	7*	3	1	5*	8*	3	2	5*	6**,**	5	2
Good/like principal/good leadership	5	9	3	1	6	8	3	2	5	8	5	0	5	6	7*	2**	4	6*	4**	2

* = Significant difference vs. Wave I at the 90% confidence level.

** = Significant difference vs. Wave XI at the 90% confidence level.

Note: All other positive reasons mentioned by less than 5% of parents.

Q.Why did you give this grade?

Negative Reasons for Grade Given to School

For the past two years, fewer parents mention a negative reason for the grade they give their child's school than in 2012 or when this study began in 2003—40% in 2014 and 42% in 2013 vs 52% in 2012 and 65% in 2003.

Parents of Elementary school students continue to be less likely to mention something negative than parents of older students.

The negative comments continue to be diverse with very few mentioned by 5% or more parents.

The most frequently given negative reasons for the grade given continues to be...

- *Better teachers needed/better teacher-student relations.* Overall, 8% of parents mention this, with parents of High School students (12%) continuing to be especially likely to say this.
- *Improve communication from teachers/Administration improve/provide/more timely information* which 6% of parents mention.

Negatives Reasons Given for Grade Given to School

	Wave I (August 2003)				Wave IX (August 2011)				Wave X (August 2012)				Wave XI (August 2013)				Wave XII (August 2014)			
	<i>Parents of Children in:</i>				<i>Parents of Children in:</i>				<i>Parents of Children in:</i>				<i>Parents of Children in:</i>				<i>Parents of Children in:</i>			
	All Parents	School	School	School	All Parents	School	School	School	All Parents	School	School	School	All Parents	School	School	School	All Parents	School	School	School
Total Respondents:	479	234	118	127	1,187	1,134	421	332	1,158	489	376	293	5,739	2,883	1,491	1,365	5,711	2,930	1,459	1,322
<u>MENTIONED SOMETHING NEG- ATIVE/IMPROVEMENT NEEDED</u>	65%	56%	64%	84%	51%*	45%*	56%*	63%*	52%*	43%*	55%*	65%*	42%*	37%*	45%*	50%*	40%*	31%*, **	45%*	51%*
<u>Mentioned communications:</u>	10%	5%	14%	13%	8	6	10	9	7	6	8*	8	6%*	5%	7%*	7%*	6%*	5%	7%*	7%*
Improve communication to parents from teachers/ administration/provide more timely information	7	4	9	9	7	6	10	9	7	6	8	8	6	4	7	7	6	5	7	7
Need to listen to parents/community/solicit input	3	1	5	6	1*	1	2*	0*	1*	1	0*	0*	0*	1	0*	0*	0*	0*	0*	0*
<u>Mentioned other reason:</u>																				
Better teachers needed/better teacher-student relations	8	4	8	15	16*	12*	17*	26*	15*	8*	18*	25*	7	5	8	13	8	4	10	12

* = Significant difference vs. Wave I at 90% confidence level.

** = Significant difference vs. Wave XI at the 90% confidence level.

Note: All other negative reasons were mentioned by less than 5% of parents during the past two measurement periods.

Q. Why did you give this grade?

Suggested Changes for Child's School

The vast majority of parents (77%) continue to suggest a change/improvement in their child's school.

The changes suggested continue to be diverse with only a small minority suggesting any one improvement.

The most frequently suggested changes are:

- *Improve communications to parents from teachers/administration/provide more timely information (12%)*
- *Better teachers needed/better teacher-student relations (9%)*
- *Unhappy with program cuts/reinstate music programs (6%)*
- *Need more AP classes/more challenging coursework/access to Merlin (5%)*

Suggested Changes for School

	Wave I (August 2003)				Wave IX (August 2011)				Wave X (August 2012)				Wave XI (August 2013)				Wave XII (August 2014)						
	<i>Parents of Children in:</i>				<i>Parents of Children in:</i>				<i>Parents of Children in:</i>				<i>Parents of Children in:</i>				<i>Parents of Children in:</i>						
	Elementary	Middle	High		Elementary	Middle	High		Elementary	Middle	High		Elementary	Middle	High		Elementary	Middle	High				
All Parents	School	School	School	All Parents	School	School	School	All Parents	School	School	School	All Parents	School	School	School	All Parents	School	School	School	All Parents	School	School	School
Total Respondents:	479	234	118	127	1,887	1,134	421	332	1,158	489	376	293	5,739	2,883	1,491	1365	5,711	2,930	1,459	1,322			
<u>SUGGESTED A CHANGE</u>	85%	84%	86%	87%	82%	80%	82%	86%	79%*	73%*	81%*	85%	75%*	73%*	75%*	80%	77%*	75%*	77%*	79%			
<u>Suggested an improvement in communications:</u>	16%	11%	20%	20%	17%	17%*	17%	16%	18%	17%*	21%	17%	11%*	12%	14%*	8%*	14%**	14%	13%*	15%**			
Improve communication to parents from teachers/administration/provide more timely information	9	7	12	10	14*	13*	15	15	16*	13*	19*	15	10	10	13	8	12*,**	13*,**	11	13**			
Need to listen to parents/community/solicit input	8	4	10	12	4*	6	2*	1*	3*	4	2*	3*	1*	2*	1*	1*	2*	1*	2*	3*,**			
<u>Other suggested improvements:</u>																							
Better teachers needed/better teacher-student relations	10	7	11	15	21*	18*	22*	31*	20*	16*	19	27*	7*	6	6*	10	9	5	11**	13			
Need more AP classes/more challenging coursework/access to Merlin	6	7	7	1	7%	9	4	3	4%	4	5	4	4	5	2	2	5	7	3*	2			
Unhappy with program cuts/reinstate music programs	2	2	1	1	1%	2	1	1	1%	2	0	1	4*	5	6*	2	6*,**	9*,**	5*	3			
Too much homework/use class time for projects	4	3	6	5	2%	2	2	2	3%	2	5	0	6	5	7	6	3**	1**	5	5			

* = Significant difference vs. Wave I at 90% confidence level.

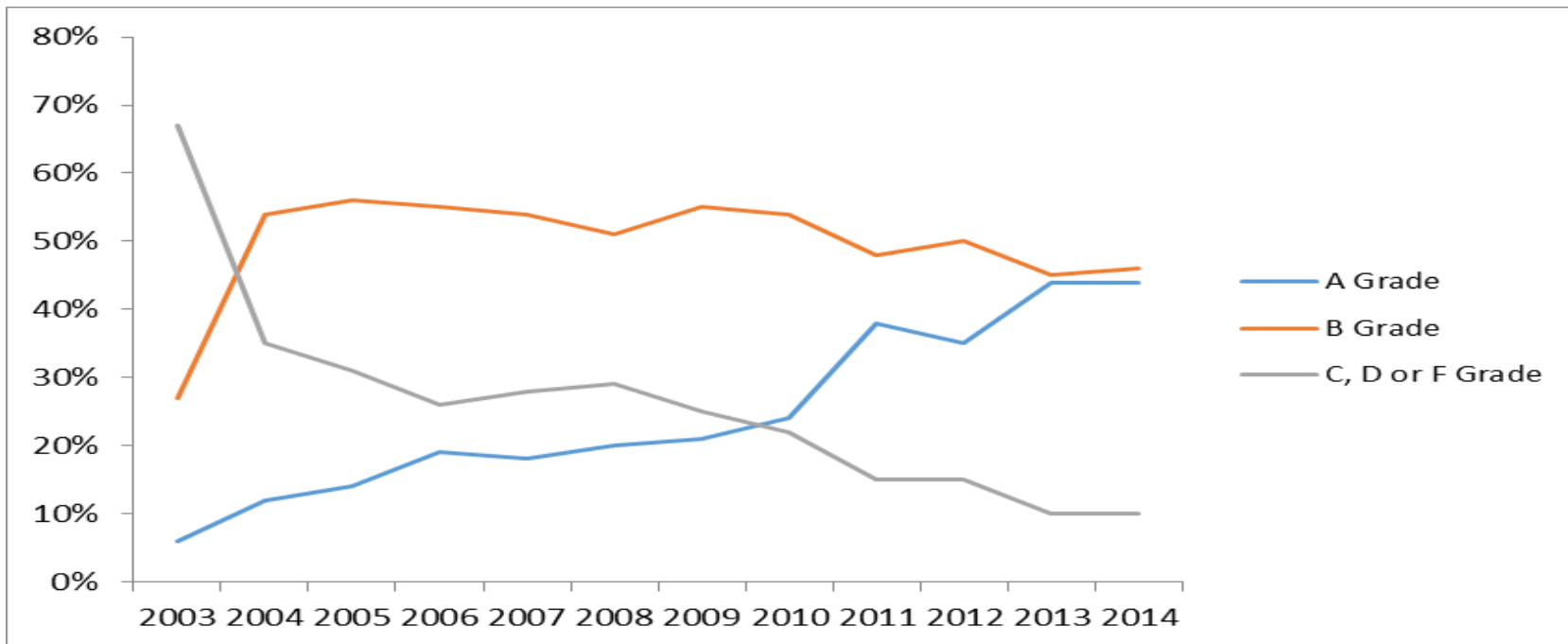
** = Significant difference vs. Wave XI at 90% confidence level.

Note: All other changes were mentioned by less than 5% of parents during the past two measurement periods.

Grade Given to Issaquah School District

Nine in ten parents (90%) continue to give the District an A or B grade for its performance. Four in ten (44%) gave the District an “A” grade in 2014 and 2013, which is significantly more than in earlier years.

GRADE GIVEN TO ISSAQUAH SCHOOL DISTRICT (By Parents of Issaquah Elementary, Middle School & High School Students Overall)



Q. What grade would you give the Issaquah School District for 2013- 2014?

Grade Given to Issaquah School District by School Level by Year

When school levels are examined, the level of “A grades being given to Issaquah school district increased significantly since 2012 and also since this study began in 2003 among parents overall and across school levels.

Grade Given to Issaquah School District by Year

	Wave I (August 2003)				Wave IX (August 2011)				Wave X (August 2012)				Wave XI (August 2013)				Wave XII (August 2014)			
	<i>Parents of Children in:</i>				<i>Parents of Children in:</i>				<i>Parents of Children in:</i>				<i>Parents of Children in:</i>				<i>Parents of Children in:</i>			
	Elementary		Middle	High	Elementary		Middle	High	Elementary		Middle	High	Elementary		Middle	High	Elementary		Middle	High
	All Parents	School	School	School	All Parents	School	School	School	All Parents	School	School	School	All Parents	School	School	School	All Parents	School	School	School
Total Respondents:	479	234	118	127	1,187	1,134	421	332	1,158	489	376	293	5,739	2,883	1,491	1,365	5,711	2,930	1,459	1,322
<i>Grade given:</i>																				
A	6%	7%	4%	4%	38%*	39%*	37%*	33%*	35%*	40%*	35%*	27%*	44%*	47%*	45%*	37%*	44%*	48%*	42%*	39%*
B	27	26	34	23%	48*	48*	47*	47*	50*	48*	51*	52*	45*	44*	46*	48*	46*	44*	47*	49*
C	37	40	33	35%	12*	11*	12*	16*	11*	9*	11*	14*	8*	7*	7*	12*	8*	7*	8*	9**, **
D	20	19	18	24%	2*	2*	3*	3*	3*	2*	3*	5*	1*	1*	1*	3*	1*	1*	2*	2*
F	10	8	11	14%	1*	1*	1*	1*	1*	0*	1*	3*	1*	1*	1*	1*	1*	0*	0*	1*

* = Significant difference from Wave I at the 90% confidence level.

** = Significant difference from Wave XI at the 90% confidence level.

Q. What grade would you give the Issaquah School District for 2013- 2014?

Positive Reasons for Grade Given to Issaquah School District

The number of parents giving a positive reason for the grade they give to the District has overall increased significantly in recent years and vs. 2003, (i.e., from 16% of parents in 2003 to 48% in 2012 and 52% in 2014).

As the following table details, the most frequently given positive reasons are that the District is...

- *Satisfied/happy with the school experience* (23%), which is significantly more than in 2013 (12%) and 2003 (2%)
- *There is good parental involvement/support/communication* (8%)
- *Quality of programs/curriculum* (5%).

Positive Reasons for Grade Given to District

	Wave I (August 2003)				Wave IX (August 2011)				Wave X (August 2012)				Wave XI (August 2013)				Wave XII (August 2014)			
	<i>Parents of Children in:</i>				<i>Parents of Children in:</i>				<i>Parents of Children in:</i>				<i>Parents of Children in:</i>				<i>Parents of Children in:</i>			
	Elementary		Middle	High	Elementary		Middle	High	Elementary		Middle	High	Elementary		Middle	High	Elementary		Middle	High
	All Parents	School	School	School	All Parents	School	School	School	All Parents	School	School	School	All Parents	School	School	School	All Parents	School	School	School
Total Respondents:	479	234	118	127	1,187	1,134	421	332	1,158	489	376	293	5,739	2,883	1,491	1,365	5,711	2,930	1,459	1,322
Gave a positive reason	16%	18%	14%	15%	51%*	52%*	51%*	48%*	48%*	55%*	46%*	41%*,**	53%*	55%*	52%*	48%*	52%*	55%*	51%*	49%*
Doing a good job	6	7	6	9	6	7	3	4	16**,**	16**,**	14**,**	17**,**	17*	17*	17*	16*	4**	4**	5**	4**
Good parental involvement/support/ communication	0	0	0	0	12*	12*	13*	12*	14*	18**,**	11*	11**,**	10*	11*	10*	6*	8**,**	9**,**	6**,**	10**,**
Satisfied/happy with school/ experience	2	3	1	0	31*	30*	32*	32*	11**,**	11**,**	13**,**	7**,**	12*	14*	11*	11*	23**,**	26**,**	21**,**	18**,**
Quality of programs/curriculum	5	6	4	2	8*	8	8	6	4**	6	3**	3**	7	8	5	5	5**	5**	6	4

* = Significant difference vs. Wave I at 90% confidence level.

** = Significant difference vs. Wave XI at 90% confidence level.

Q. Why did you give this grade?

Negative Reasons for Grades

Fewer parents are giving a negative reason for the grade they give the District—which may be a reflection of the high levels of A/B grades being given.

In 2014, the number of parents (33%) giving a negative reason for the grade they give to the District declined significantly vs. 2013 (38%) and 2003 (85%).

- Dissatisfactions are at extremely low levels. There were no specific dissatisfactions mentioned by 5% or more parents.
- The number of parents mentioning dissatisfaction with communications from the District has significantly declined--from 16% of parents overall in 2003 to 4% in 2014.

Negative Reasons for Grade Given District

	Wave I (August 2003)				Wave IX (August 2011)				Wave X (August 2012)				Wave XI (August 2013)				Wave XII (August 2014)			
	<i>Parents of Children in:</i>				<i>Parents of Children in:</i>				<i>Parents of Children in:</i>				<i>Parents of Children in:</i>				<i>Parents of Children in:</i>			
	All Parents	Elementary School	Middle School	High School	All Parents	Elementary School	Middle School	High School	All Parents	Elementary School	Middle School	High School	All Parents	Elementary School	Middle School	High School	All Parents	Elementary School	Middle School	High School
Total Respondents:	479	234	118	127	1,187	1,134	421	332	1,158	489	376	293	5,739	2,883	1,491	1,365	5,711	2,930	1,459	1,322
<u>Mentioned something negative/ improvement needed</u>	85%	85%	85%	87%	46%*	44%*	50%*	48%*	43%*	39%*	42%*	50%*	38%*,**	36%*	37%*	42%**,**	33%*,**	31%*,**	34%*	36%*,**
<u>Mentioned Communication Need to listen to parents/ community/solicit input</u>	16	12	19	21	5*	5*	5*	4*	4*	3*	4*	6*	4*	4*	3*	3*	4*	4*	3*	5*
Improve communication to parents from teacher/administration/provide more timely information	11	6	15	16	1*	1*	1*	1*	1*	0*	1*	1*	1*	1*	1*	0*	1*	0*,**	0*	2*
Other Reasons Mentioned																				
Increase funding/school support/work with State for funding	6	6	5	6	5	5	5	4	3*	3*	3*	4	3*	3*	3*	2**	3*	4*	3*	3
	5	6	4	5	6	5	7	6	2*	2*	1*	2	1*	1*	1*	1*	0*,**	0*,**	1*	0*

* = Significant difference vs. Wave I at 90% confidence level.

** = Significant difference vs. Wave XI at 90% confidence level.

Q. Why did you give this grade?

Note: All other negative reasons were historically and are currently mentioned by less than 5% of parents.

Suggested Changes for District

The majority of parents (59%) suggest at least one way that the District can change or improve--which is significantly fewer than in 2012 (70%), 2011 (75%) or 2003 (92%). It is also directionally fewer than in 2013 (64%). The lower level of parents making a suggestion may be due to the higher grades being given to the District now.

As the tables that follow detail, the requests for changes continue to be diverse.

One of the most frequently requested change historically has been to improve communication. However, the number of parents requesting improved communication overall from the District has declined significantly in recent years (from 24% in 2003 to 10% in 2014.).

While only mentioned by small minorities, the most frequently requested changes include...

- *Improve communications to parents from teachers/administration/provide more timely information (8%)*
- *Better teachers needed/better student-teacher relations (5%)*
- *Dislike Wednesday schedule (5%)*

All other suggestions were made by less than 5% of parents.

Suggested Changes for District

	Wave I (August 2003)				Wave IX (August 2011)				Wave X (August 2012)				Wave XI (August 2013)				Wave XII (August 2014)									
	<i>Parents of Children in:</i>				<i>Parents of Children in:</i>				<i>Parents of Children in:</i>				<i>Parents of Children in:</i>				<i>Parents of Children in:</i>									
	Elementary		Middle		Elementary		Middle		Elementary		Middle		Elementary		Middle		Elementary		Middle		Elementary		Middle		High	
	All Parents	School	School	School	All Parents	School	School	School	All Parents	School	School	School	All Parents	School	School	School	All Parents	School	School	School	All Parents	School	School	School		
Total Respondents:	479	234	118	127	1,187	1,134	421	332	1,158	489	376	293	5,739	2,883	1,491	1,365	5,711	2,930	1,459	1,322						
<u>SUGGESTED A CHANGE</u>	<u>92%</u>	<u>93%</u>	<u>94%</u>	<u>91%</u>	<u>75%*</u>	<u>75%*</u>	<u>74%*</u>	<u>75%*</u>	<u>70%*</u>	<u>69%*</u>	<u>68%*</u>	<u>73%*</u>	<u>64%*</u>	<u>64%*</u>	<u>65%*</u>	<u>66%*</u>	<u>59%*</u>	<u>60%*</u>	<u>61%*</u>	<u>54%*, **</u>						
<u>Suggested an improvement in communications</u>	<u>24%</u>	<u>23%</u>	<u>23%</u>	<u>25%</u>	<u>12%*</u>	<u>13%*</u>	<u>10%*</u>	<u>12%*</u>	<u>12%*</u>	<u>10%*</u>	<u>13%*</u>	<u>13%</u>	<u>8%*</u>	<u>9%*</u>	<u>8%*</u>	<u>8%*</u>	<u>10%*</u>	<u>13%*, **</u>	<u>8%*</u>	<u>7%*</u>						
Improve communication to parents from teachers/administration/provide more timely information	12	13	12	9	10	11	9	11	9	7*	11	9	7*	7*	7*	6	8*	12*	7*	4						
Need to listen to parents/community/solicit input	15	12	16	18	2*	3*	2*	2*	3*	3*	3*	4*	2*	2*	1*	3*	2*	0*, **	2*	4*						
<u>Suggested other improvements</u>																										
Better teachers needed/better student-teacher relations	3	2	3	6	12*	11*	13*	15*	8*	7*	8*	11	5*	5*	5	6	5	3	7	7						
Dislike Wednesday schedule	4	4	6	1	5	5	7	5	9*	6	9	13*	3	3	3*	4	5	3	7((5						
Increase funding/school support/work with State for funding/better use of funds	8	10	7	6	10	9	11	9	3*	4*	3*	2	3*	3*	4	1	1*, **	1*	0*	0*						
Change curriculum/go back to basics	3	5	1	0	8*	9*	4	7*	5*	8	6*	1	4	4	3	4	4	4	4	4						
Improvements needed in Math curriculum	1	0	2	0	6	7*	4	5*	4*	6*	3	3	3*	5*	1**	1	2	3*	2	0						
Unhappy with program cuts/reinstate music programs	2	2	1	1	1	1	2	2%	1	2	1	0	5*	6*	6*	4	3	4	3	2						

* = Significant difference vs. Wave I at 90% confidence level.

** = Significant difference vs. Wave XI at 90% confidence level.

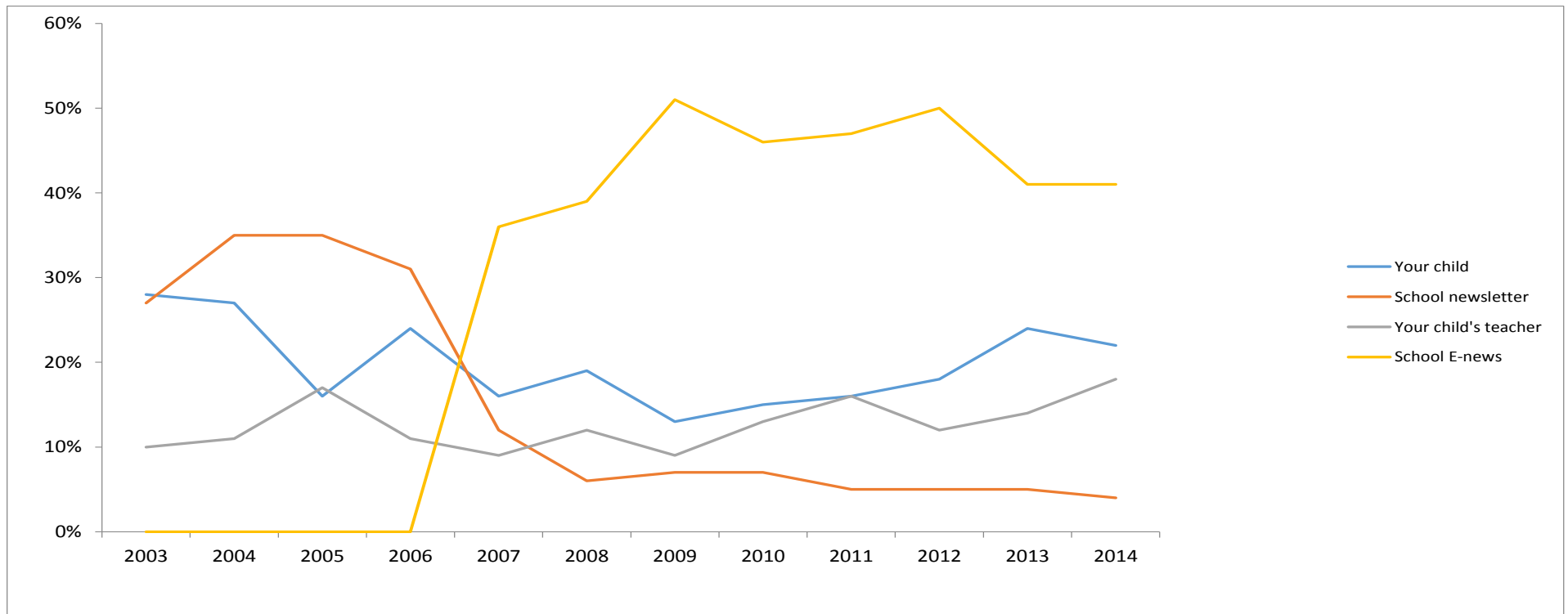
Q. What would you suggest as changes that might cause you to give the Issaquah School District a higher grade for next year?

Best Source of Information about Child's School

The School E-News continues to have a strong presence. School E-News is most frequently mentioned as the best source of information about the child's school—by four in ten parents (41%) overall in 2014 and also in 2013.

Best Source of Information about Child's School

(Top Sources Historically Vs. Now)



Q. What is your best source of information about your child's school?

Across school levels the School E-News is now the most frequently mentioned best source of information, followed by the child and the child's teacher.

Best Source of Information About Your Child's School

	Wave I (August 2003)				Wave IX (August 2011)				Wave X (August 2012)				Wave XI (August 2013)				Wave XII (August 2014)			
	<i>Parents of Children in:</i>				<i>Parents of Children in:</i>				<i>Parents of Children in:</i>				<i>Parents of Children in:</i>				<i>Parents of Children in:</i>			
	Elementary		Middle	High	Elementary		Middle	High	Elementary		Middle	High	Elementary		Middle	High	Elementary		Middle	High
	All Parents	School	School	School	All Parents	School	School	School	All Parents	School	School	School	All Parents	School	School	School	All Parents	School	School	School
Total Respondents:	479	234	118	127	1,887	1,134	421	332	1,158	489	376	293	5,739	2,883	1,491	1,365	5,711	2,930	1,459	1,322
School E-News	0%	0%	0%	0%	47%*	43%*	51%*	54%*	50%*	46%*	53%*	54%*	41%*	38%*	45%*	42%*	41%*	35%**,**	47%*	48%**,**
School Newsletter	27	27	31	24	5*	7*	5*	3*	5*	7*	4*	2*	5*	6*	5*	4*	4*	5*	5*	3*
Your Child	28	19	32	40	16*	11*	21*	24*	18*	12*	21*	24*	24	17*	28	33	22*	15	28	31*
Your Child's Teacher	10	15	6	3	16*	24*	5	4	12	23*	5	3	14*	23*	6	4	18**,**	30**,**	6	3**
Other Parents	13	16	8	13	5*	7*	4*	2*	4*	5*	5	3*	7*	8*	5	5*	6*	8*	4*	4*
Internet	3	3	4	2	4	3	7	6	5	3	7	5	4	3	5	7	4	3	6	5**
Work/volunteer at school	8	10	8	4	2*	2*	1*	2	1*	1*	1*	1	1*	1*	0*	0*	1*	1*	0*	1*
PTA	1	3	0	0	1	1*	1	1	1	2	1	1	1	1*	0	0	1	1*	0	0
Media (Radio, Newspaper, TV)	#	0	0	1	0	0	0	0	0	0	0	0	0	0	0	0	0	0	0	0
District Newsletter	#	0	1	1	0	0	0	0	0	0	0	0	#	#	1	1	0	0	0	0
District E-News	0	0	0	0	2*	2*	3*	2*	2*	2*	2	3	2*	2*	3*	3	2*	1*	2*	3*
Other Sources	4	3	6	5	2*	1*	2*	3	1*	1*	2*	2	1*	1*	2*	1*	1*	1*	1*	1*

* = Significant difference at 90% confidence level vs. Wave I.

** = Significant difference at 90% confidence level vs. Wave XI.

= Less than 1%

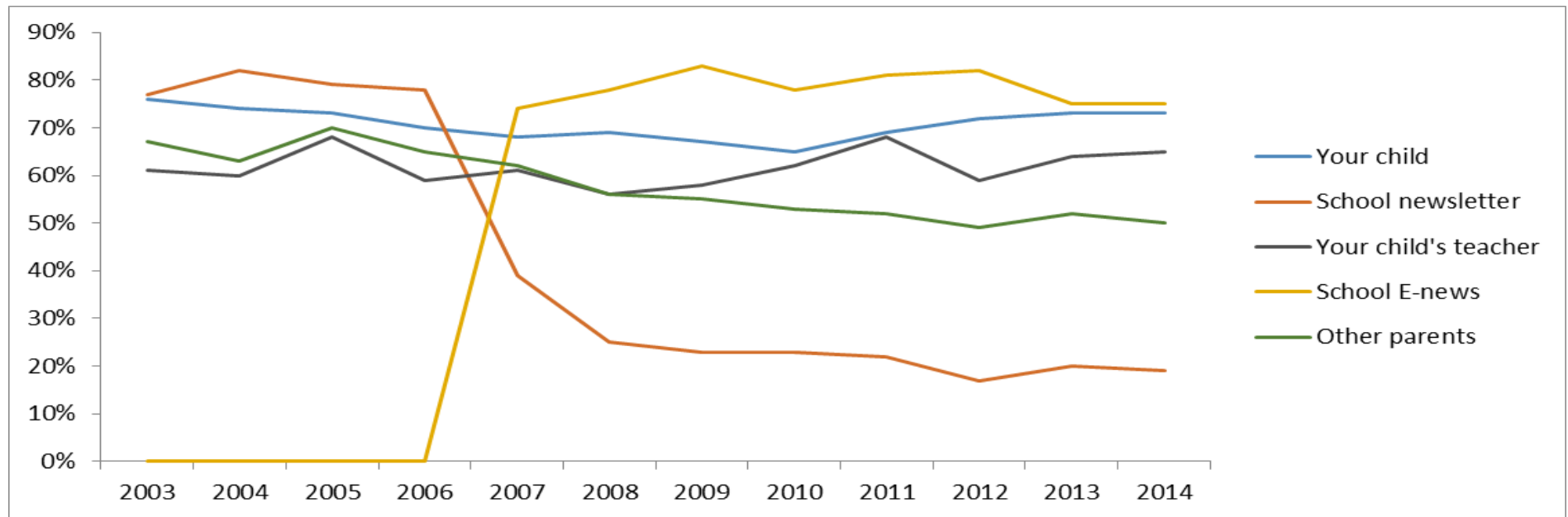
Q.What is your best source of information about your child's school?

All Sources of Information about Child's School

The vast majority of parents (75%) now use the School E-News as one of their sources of information about their child's school. Other frequently used sources of information about the child's school are the child (73%), the child's teacher (65%) and other parents (50%). Usage of the School Newsletter has declined over the past ten years, from 77% in 2003 to 19% in 2014.

All Sources of Information About Your Child's School

(Top 5 Sources Historically Vs. Now)



Q. What is your best source of information about your child's school? What are other important sources of information about your child's school?

Across school levels, the School E-News is now the most frequent source of information about the child's school with three out of four (75%) of parents using it. At the same time usage of a number of other sources of information has declined since 2003.

All Sources of Information About Child's School

	Wave I (August 2003)				Wave IX (August 2011)				Wave X (August 2012)				Wave XI (August 2013)				Wave XII (August 2014)			
	<i>Parents of Children in:</i>				<i>Parents of Children in:</i>				<i>Parents of Children in:</i>				<i>Parents of Children in:</i>				<i>Parents of Children in:</i>			
	All Parents	School	School	School	All Parents	School	School	School	All Parents	School	School	School	All Parents	School	School	School	All Parents	School	School	School
Total Respondents:	479	234	118	127	1,887	1,134	421	332	1,158	489	376	293	5,739	2,883	1,491	1,365	5,711	2,930	1,459	1,322
School E-News	0%	0%	0%	0%	81%*	78%*	85%*	87%*	82%*	81%*	83%*	83%*	75%*	73%*	77%*	77%*	75%*	72%*	78%*	80%*
School Newsletter	77	78	81	71	22*	27*	15*	15*	17*	25*	15*	8*, **	20*	27*	15*	13*	19*	24*, **	15*	11*
Your Child	76	74	75	81	69*	64*	75	77	72*	64*	78	78	73*	68*	79	79	73	67*	79	80
Your Child's Teacher	61	82	43	39	68*	82	51	40	59	81	48	38	64	82	50	40	65*	84**	52*	39
Other Parents	67	75	54	65	52*	55*	48*	46*	49*	52*	48*	48*	52*	57*	49*	45*	50*, **	55*	45*, **	44*
District E-News	0	0	0	0	40*	37*	43*	46*	43*	41*	44*	45*	36*	33*	39*	39*	34*, **	30*, **	39*	36*
Internet	34	36	37	26	41*	34	54*	51*	45*	38	50*	53*	36	31*	38	44	33**	27*, **	40	39*, **
District Newsletter	24	22	25	25	6*	5*	7*	9*	5*	4*	8*	5*	6*	4*	8*	8*	5*	3*	7*	6*, **
Media (Radio, Newspaper, TV)	18	14	21	23	5*	5*	7*	6*	6*	3*	6*	10*	5*	3*	5*	9*	3*, **	2*, **	4*	6*, **
Work/volunteer at school	10	12	10	5	2*	2*	2*	3	2*	2*	2*	1	1*	2*	1*	1*	1*	1*, **	1*	1*
PTA	4	5	4	2	3	3	2	2	4**	6	2	5	2*	3*	1*	1	2*	3	1*	1
Other Sources	7	6	8	8	4*	3*	5*	5	3*	2*	3*	4	3*	3*	3*	4	2*, **	2*, **	2*	2*, **

* = Significant difference vs. Wave I at 90% confidence level.

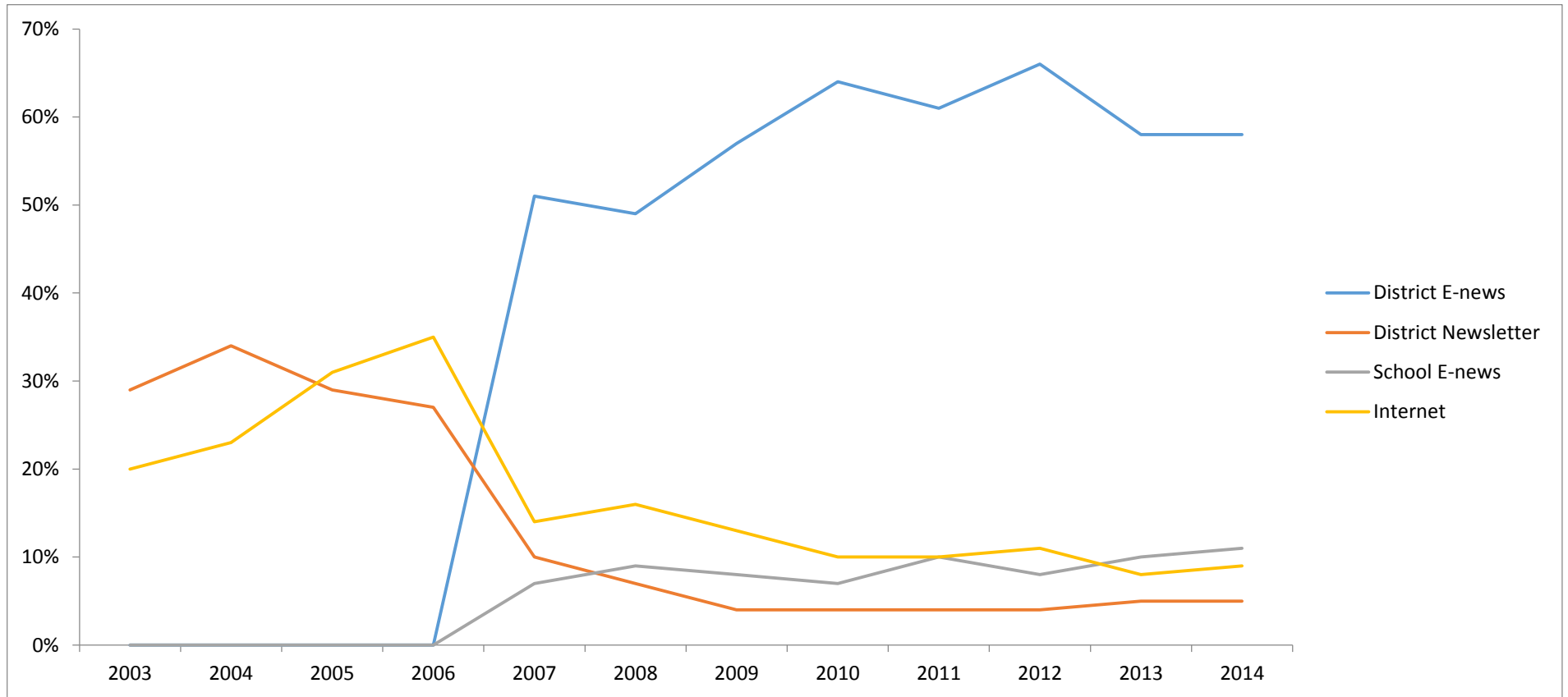
** = Significant difference vs. Wave XI at 90% confidence level.

Q. What is your best source of information about your child's school? What are other important sources of information about your child's school?

Best Source of Information about Issaquah School District

The District E-News is now the most popular source of information about the District. Currently six in ten parents (58%) consider it to be their best source of information about the District. At the same time other previously popular sources of information declined in popularity during recent years.

Best Source of Information About School District (Top 4 Sources Historically Vs. Now)



Q. What is your best source of information about the Issaquah School District?

Across school levels, the District E-News has grown to be considered the best source of information about the District by six in ten parents (58%). In recent years a number of other sources have declined in being considered the best source of information about the District.

Best Source of Information About the Issaquah School District

	Wave I (August 2003)				Wave IX (August 2011)				Wave X (August 2012)				Wave XI (August 2013)				Wave XII (August 2014)			
	Parents of Children in:				Parents of Children in:				Parents of Children in:				Parents of Children in:				Parents of Children in:			
District E-News	0%	0%	0%	0%	61%*	62%*	60%*	62%*	66%*	68%*	64%*	65%*	58%*,**	60%*,**	57%*,**	55%*,**	58%*	59%*	57%*	55%*
District Newsletter	29	25	33	33	4*	3*	5*	8*	4*	3*	5*	3*	5**,**	3*	7*	8**,**	5*	3*	8*	7*
Internet	20	23	25	10	10*	10*	11*	9	11*	11*	12*	9	8**,**	7**,**	8**,**	10	9*	8*	10*	9
Media (radio, newspaper, tv)	16	16	14	17	1*	1*	1*	1*	1*	0*	0*	2*	1*	1*	1*	1*	1*	0*	1*	2*
Other parents	13	17	9	12	4*	4*	5*	2*	3*	1*	3*	3*	6**,**	6**,**	5*	5*	5*	6*	4*	5*
School Newsletter	6	7	4	7	2*	4*	1*	0*	1*	2*	1*	0*	3**,**	4**,**	2**,**	1	3*	4*	2*	1*
School E-News	0	0	0	0	10*	11*	9*	9*	8*	6*	8*	9*	10**,**	11**,**	10*	10*	11*	11*	10*	11*
Your child	2	0	4	5	3	2	3	4	2	2	2	3	5**,**	3*	6**,**	7**,**	4*	2*	6	7
PTA	2	3	0	2	0*	1*	0	0	1*	1*	1	1	0**,**	0*	0	0**,**	0*	0*	0	0
Work/volunteer at school	4	3	4	5	1*	1*	0*	1*	1*	0*	1*	1*	0**,**	0*	0*	0*	0*	0*	0*	0*
Your child's teacher	1	1	2	1	2	2	2	1	2	4*	1	1	3*	4*	2	1	3*	4*	2	1
Other Sources	4	3	4	5	1*	1*	1*	3	1*	0*	2	2	1*	1*	1**,**	1*	1*	0*	1*	1*

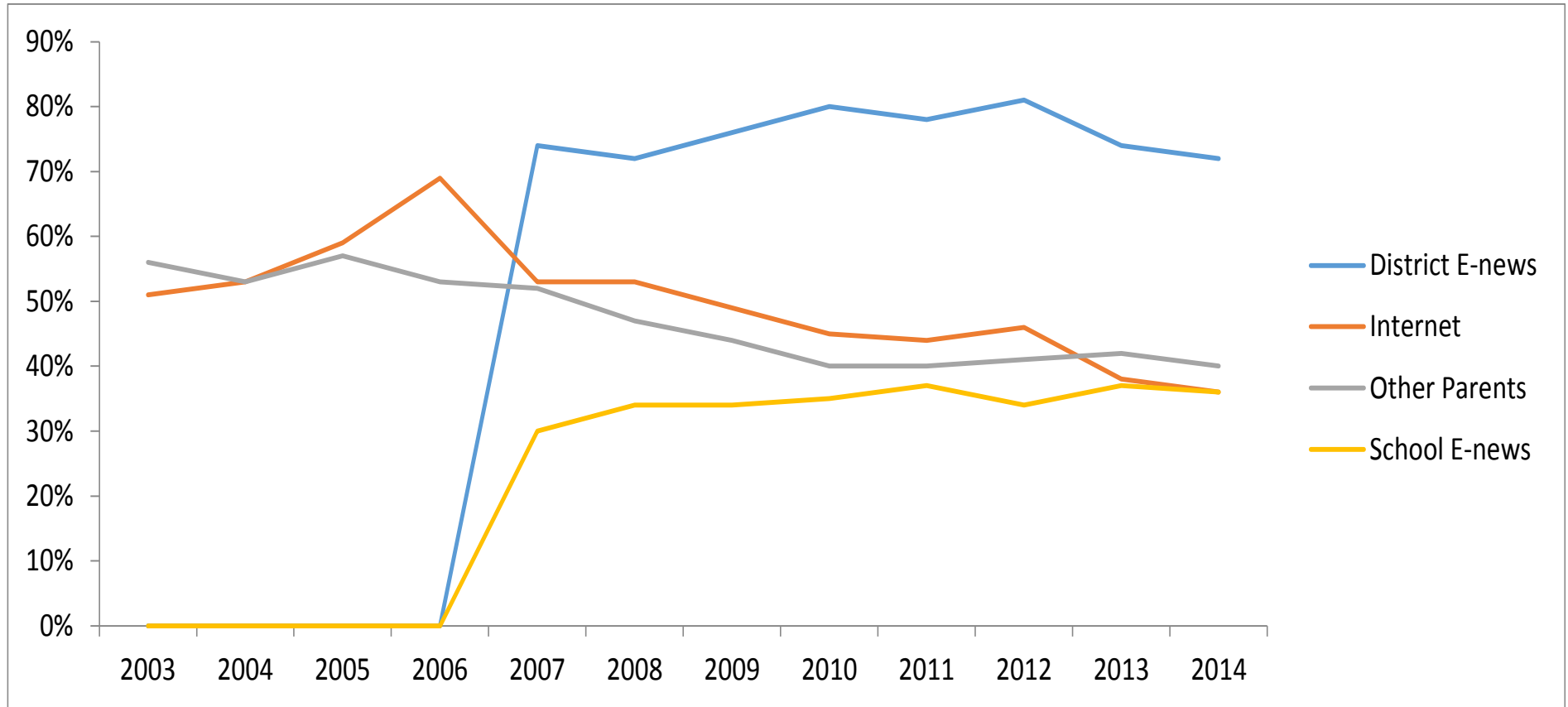
* = Significant difference vs. Wave I at 90% confidence level.

** = Significant difference vs. Wave XI at 90% confidence level.

Q. What is your best source of information about the Issaquah School District?

All Sources of Information about Issaquah School District

With regard to all sources of information about the District, the District E-News is now used by approximately three out of four (72%) parents. The next most frequently used sources are other parents (40%), the Internet (36%) and School E-News (36%).



Q. What is your best source of information about the Issaquah School District? What are other sources of information about the Issaquah School District?

Across school levels, the District E-News is now the predominant source of information about the District for parents—with seven in ten (72%) using it. In the distance, other popular sources include other parents, the Internet and the School E-News.

All Sources of Information About the Issaquah School District

	Wave I (August 2003)				Wave IX (August 2011)				Wave X (August 2012)				Wave XI (August 2013)				Wave XII (August 2014)			
	<i>Parents of Children in:</i>				<i>Parents of Children in:</i>				<i>Parents of Children in:</i>				<i>Parents of Children in:</i>				<i>Parents of Children in:</i>			
	All Parents	School	School	High	All Parents	School	School	High	All Parents	School	School	High	All Parents	School	School	High	All Parents	School	School	High
Total Respondents:	479	234	118	127	1,187	1,134	421	332	1,158	489	376	293	5,740	2,883	1,491	1,365	5,711	2,930	1,459	1,322
District E-News	0%	0%	0%	0%	78%*	79%*	75%*	78%*	81%**,**	80%*	80%**,**	82%*	74%**,**	74%**,**	74%**,**	72%**,**	72%*	74%*	70%**,**	70%*
District Newsletter	63	64	66	59	16*	15**,**	14*	19*	13*	12*	16*	9*	14*	13*	15*	15**,**	13**,**	11**,**	16*	13*
Other parents	56	55	60	54	40*	40*	40*	40*	41*	42*	39*	42*	42*	44*	42*	37**,**	40**,**	41**,**	39*	39*
Internet	51	55	60	39	44*	41*	48	47*	46*	43*	51	45*	38**,**	35**,**	40**,**	41	36**,**	33**,**	41*	38
Media (radio, newspaper, TV)	47	46	51	47	16*	13*	17*	23*	15*	12*	15*	21*	13**,**	11*	12*	18*	11**,**	8**,**	12*	15**,**
School Newsletter	32	32	33	30	12**,**	14*	10*	7*	7**,**	8**,**	6**,**	6*	11**,**	15**,**	8*	7*	11*	14*	8*	6*
School E-News	0	0	0	0	37*	37*	39*	36*	34**,**	33*	33**,**	37*	37*	37*	38*	35*	36*	37*	36*	34*
Your child's teacher	28	32	25	26	26**	29**	26	19	22**,**	27	22	13**,**	27**	32**	26**	19**	28	33	26	19*
Your child	18	13	18	28	20**	16**	29*	21*	22	27	22	13**,**	26**,**	19**,**	34**,**	33*	25*	17**	33*	31
Work/Volunteer at School	4	4	4	6	1*	1*	1*	1*	1*	0*	2	1*	0**,**	0*	0**,**	1*	1*	0*	1*	1*
PTA	3	4	3	2	2	2*	2	2	2	2*	2	3	1**,**	1**,**	1**,**	1**	1*	1*	1*	1
Other	5	5	4	6	2**,**	2**,**	2*	5	3*	2*	4**	3	2*	2*	2**,**	2	2*	1**,**	2*	2*

* = Significant difference vs. Wave I at 90% confidence level.

** = Significant difference vs. Wave XI at 90% confidence level.

Q.What is your best source of information about the Issaquah School District? What are other sources of information about the Issaquah School District?